



# **Communities Economic Development Fund (CEDF)**

## **Look North On-Line Forum Presentation**

### **Monday November 2, 2020**

### **Topic: A Year in Review**



## **Vision Statement**

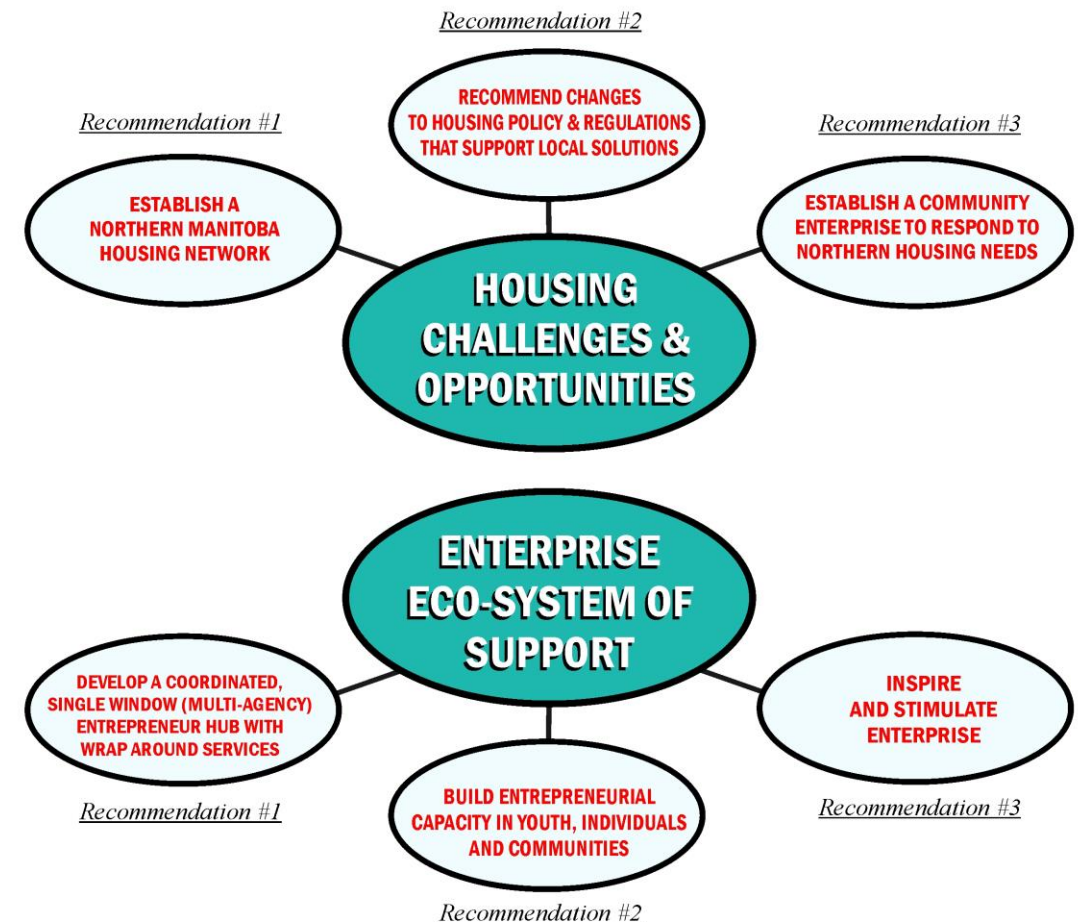
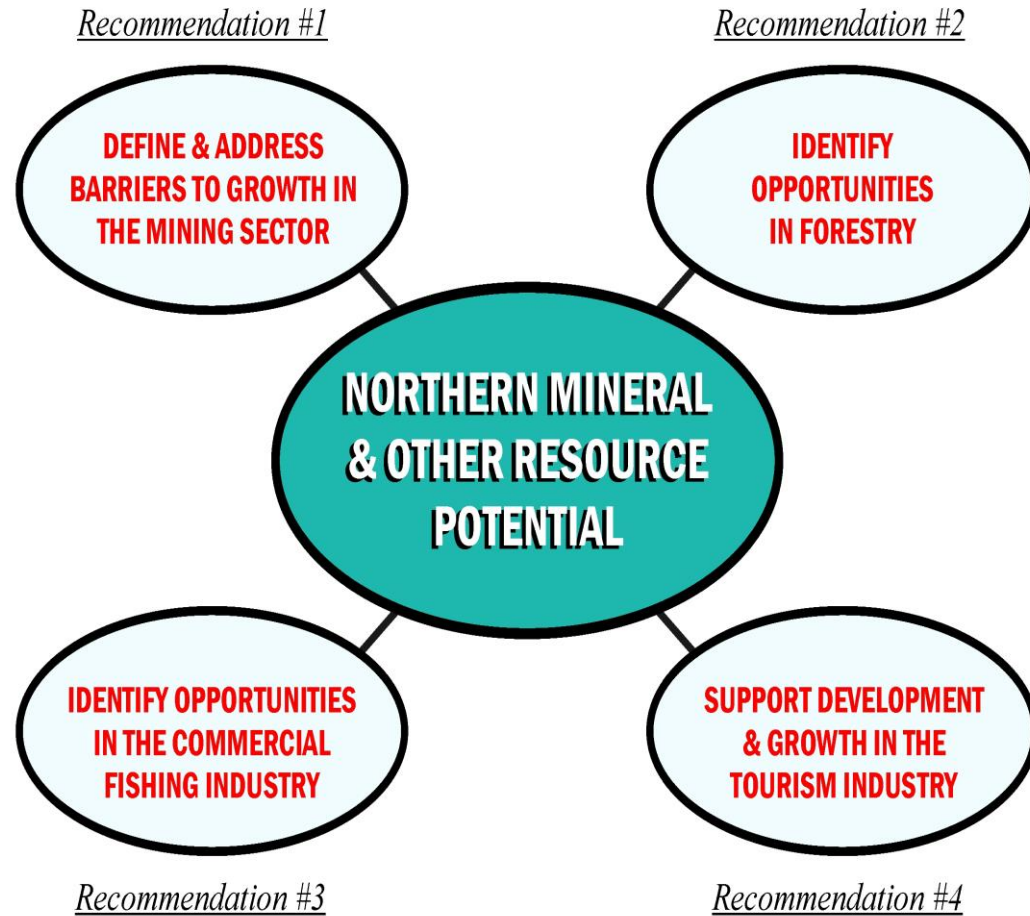
*“Growing Northern Manitoba.”*

## **Mission Statement**

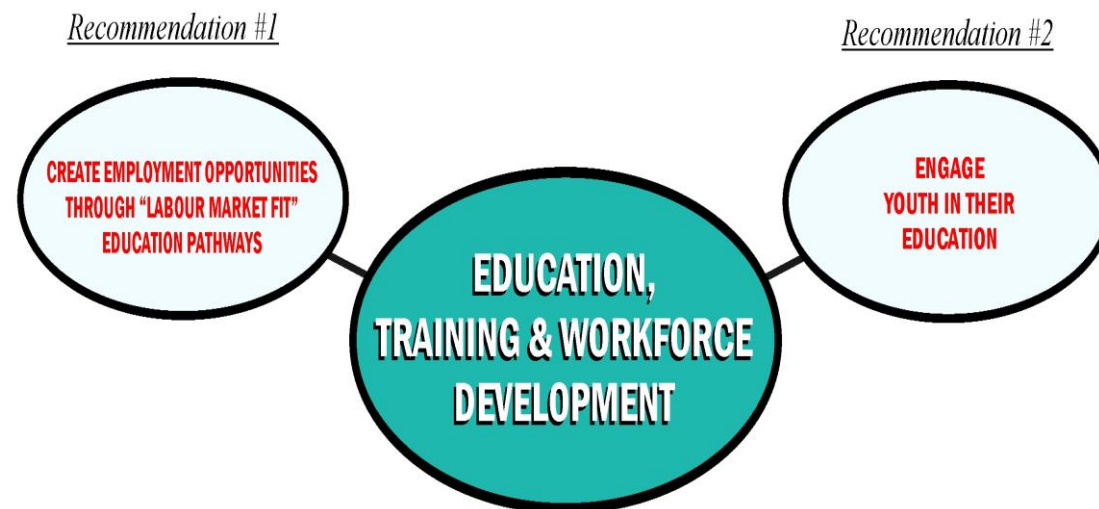
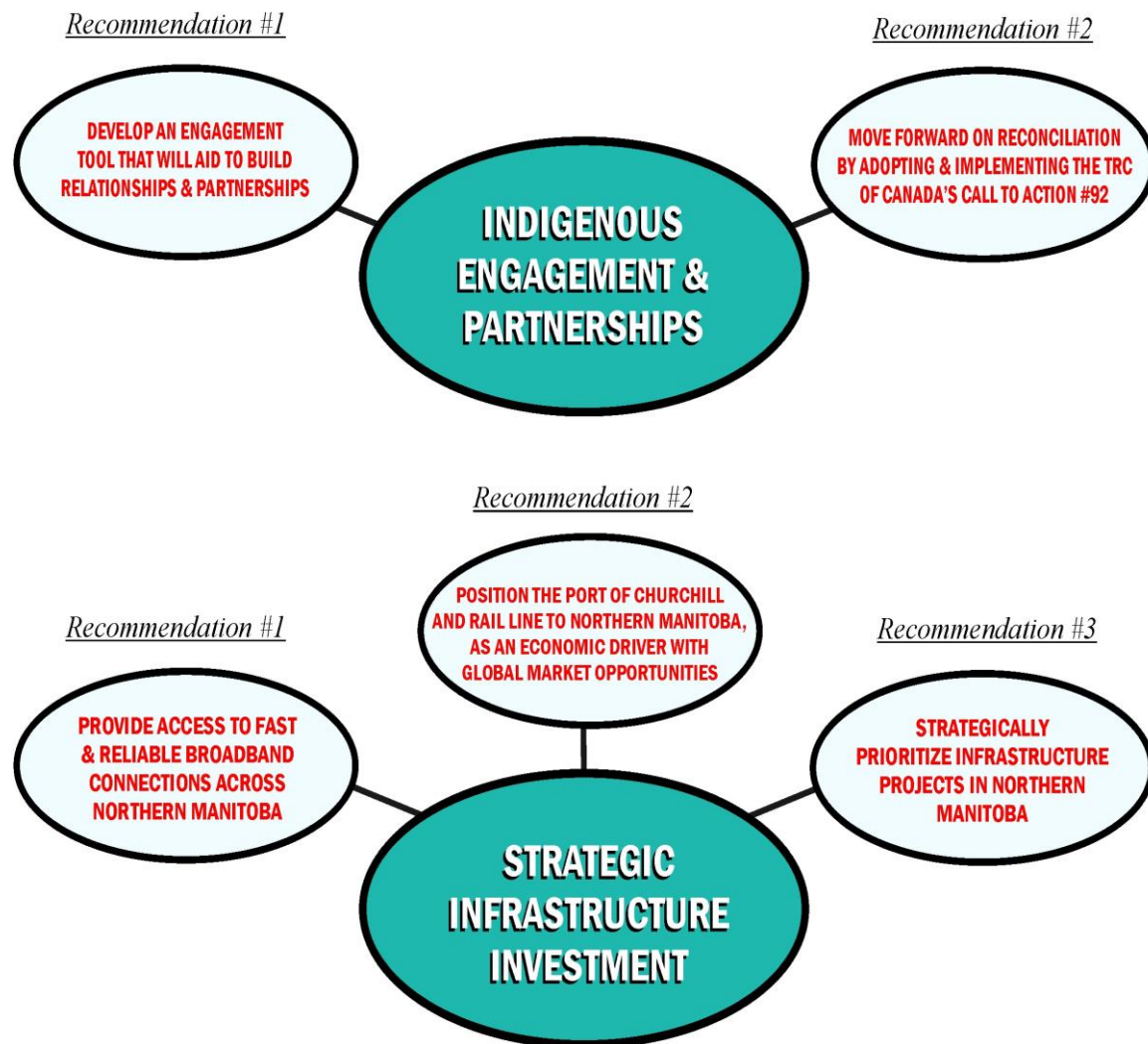
*“Through leadership in community building, creating connections and business development we unleash the economic power of Northern Manitoba.”*

# Look North Report and Action Plan – 6 Areas of Focus

- In 2018, CEDF became the Province's **regional economic development partner** for Northern Manitoba, as well as the lead entity for coordinating the **implementation of the Look North Report and Action Plan**. The Look North region consist of 27 First Nations, 10 Urban Industrialized communities, 14 Indigenous and Northern Relations communities, and 1 RM.



# Look North Report and Action Plan (Cont'd)



## Operationalization of Look North

- ❑ In partnership with funding from Western Diversification, CEDF operationalized Look North in the fall of 2019.
- ❑ In addition to the head office in Thompson, CEDF opened Look North offices at the Otineka Mall at Opaskwayak Cree Nation and at the Greenstone office in Flin Flon.
- ❑ Look North staff was hired in October 2019, to focus on resource optimization strategies in Commercial Fishing and Forestry and on delivering “concierge services” in the area of **communication and marketing, business development, community building and engagement, and information on access to capital and other resources for entrepreneurs, businesses, and communities. Currently Look North staff is working with 59 individuals and organizations in 20 communities to assist in the start up of small businesses and other economic enterprises.**





# Look North Staff Introduction

## Shannon Goulet

P 204-627-8370, C 204-620-0233, [sgoulet@cedf.mb.ca](mailto:sgoulet@cedf.mb.ca)

**Functional responsibility for supporting youth programs to help create a “culture of commerce”.**

### **Geographical Areas;**

Barren Lands First Nation  
Carrot Valley (LGD of Kelsey)  
Lac Brochet Community  
Mosakahiken Cree Nation  
Opaskwayak Cree Nation  
Sayisi Dene First Nation (Tadoule)  
Town of The Pas  
York Factory First Nation

Brochet Community  
Cormorant Community Council  
Moose Lake Community Council  
Northlands Denesuline First Nation  
Ralls Island (LGD of Kelsey)  
Shamattawa First Nation  
Wanless (LGD of Kelsey)

# Look North Staff Introduction (Cont'd)

Stephanie Johnson

C 204-271-0154, [sjohnson@cedf.mb.ca](mailto:sjohnson@cedf.mb.ca)

**Functional responsibilities are the creation of community-based tourism opportunities.**

## **Geographical Areas;**

Churchill

Cranberry Portage

Flin Flon

Fox Lake Cree Nation

Gillam

Mathias Colomb First Nation (Pukatawagan)

Sherridon Community

Snow Lake

# Look North Staff Introduction (Cont'd)

## Ken Slobodian

P 204-778-4138 Ext. 253, C 204-307-0570, [kslobodian@cedf.mb.ca](mailto:kslobodian@cedf.mb.ca)

**Functional responsibility is to facilitate a Small Business/Industry Mentoring program, EV initiatives and Look North's Newsletter.**

### **Geographical Areas;**

Bunibonibee Cree Nation (Oxford house)  
Cross Lake Community  
Grand Rapids Community  
Incorporated Community of Nelson House  
Nisichawayasihk Cree Nation  
Norway House Cree Nation  
Pimicikamak Cree Nation (Cross Lake Band)  
Wabowden

Chemawawin Cree Nation  
Easterville Community  
Ilford Community  
Misipawistik Cree Nation  
Norway House Community  
Pikwitonei Community  
Thicket Portage  
War Lake First Nation



# Look North Staff Introduction (Cont'd)

## Kurt Thibault

P 204-778-4138 Ext. 252, C 204-307-1112, [ktibault@cedf.mb.ca](mailto:ktibault@cedf.mb.ca)

**Functional responsibilities include gathering information on Financial and Other Support Programs.**

### **Geographical Areas:**

Garden Hill First Nation

Gods Lake Narrows Community

Leaf Rapids

Manto Sipi Cree Nation (God's River)

O-Pipon-Na-Piwin Cree Nation (South Indian Lake)

Red Sucker Lake

Tataskweyak Cree Nation (Split Lake)

Wasagamack First Nation

Gods Lake First Nation (Gods Lake Narrows First Nation)

Island Lake

Lynn Lake

Marcel Colomb First Nation (Black Sturgeon Falls)

Red Sucker Lake First Nation

St. Theresa Point First Nation

Thompson

# Look North Staff Introduction (Cont'd)

## Saraj Thethy

Functional responsibilities are acting as the lead consultant for Look North Commercial Fisheries Optimization Plan and implementation of Look North's Communication Strategy.

P 204-778-4138 Ext. 254, C 204-307-0355, [sthethy@cedf.mb.ca](mailto:sthethy@cedf.mb.ca)

Look North Natural Resources Officer – All Communities

## CEDF Look North– A YEAR IN REVIEW

In addition to providing supports to communities and individuals looking at starting or expanding economic enterprises, the following projects were undertaken by CEDF under the Look North initiative.

- ❑ In partnership with Intergroup Consultant and Western Diversification the creation of a Commercial Fishing Strategy that will assist in a long-term sustainable industry for our Northern Commercial Fishers.



InterGroup  
CONSULTANTS



## CEDF Look North– A YEAR IN REVIEW (cont'd)

- ❑ In partnership with Nordicity, New Media Manitoba and Western Diversification the creation of a Digital Media Strategy for Northerners. Putting together a road map to assist Northerners to engage in this fast-growing industry.



## CEDF Look North– A YEAR IN REVIEW (cont'd)

- ❑ In partnership with Western Diversification the creation of a Forest Optimization Strategy for Northern Manitoba to assist in the creation of community-based enterprises.





## CEDF Look North– A YEAR IN REVIEW (cont'd)

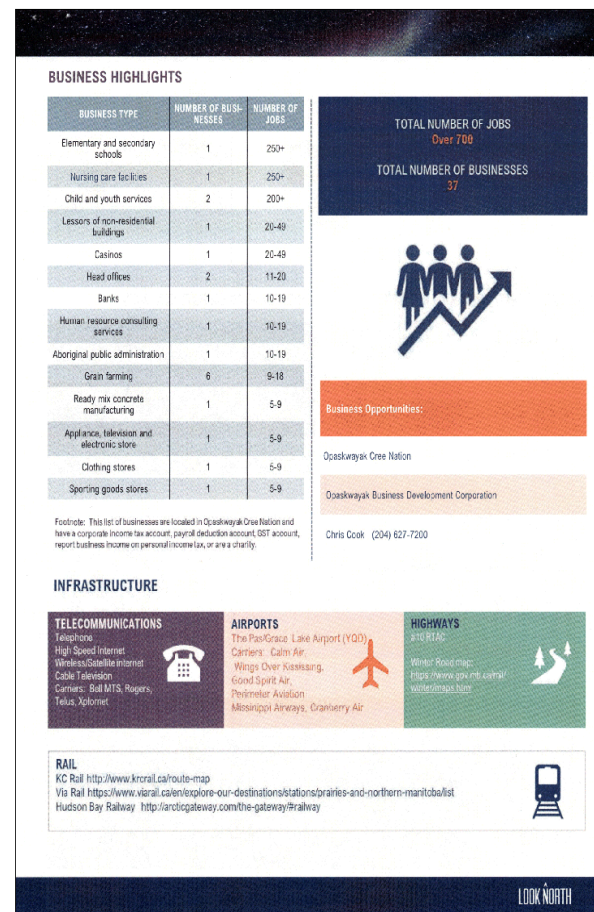
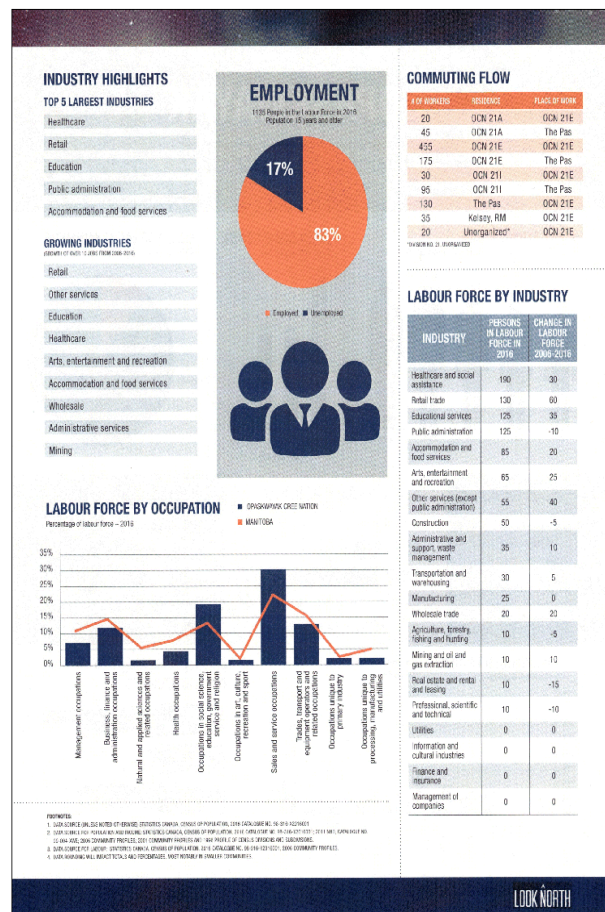
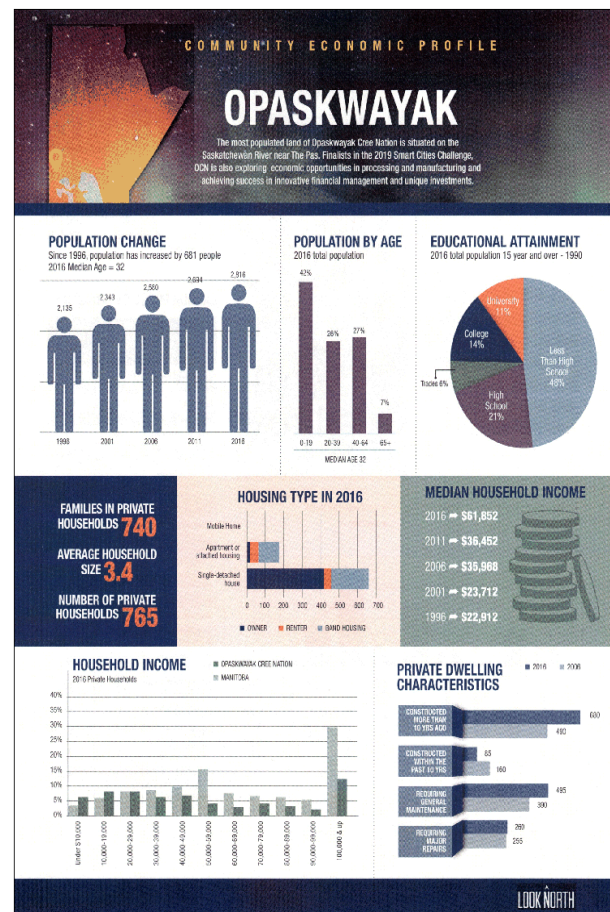
- ❑ In partnership with Earth Rhythms, Travel Manitoba and Indigenous Tourism Canada, supporting capacity building, training, and support in experiential tourism – enabling Look North staff to work with communities and entrepreneurs to identify and “bring to market” local community indigenous and experiential tourism assets.





# CEDF Look North— A YEAR IN REVIEW (cont'd)

- Creation of individual profiles for the over 50 Look North communities. These profiles are now on our CEDF website at [cedf.mb.ca](http://cedf.mb.ca).





## CEDF Look North– A YEAR IN REVIEW (cont'd)

- ❑ **Northern Harvesters Market** - In order to assess local demand for commercially harvested fish and other northern harvested products, Look North facilitated the Northern Harvesters tables in Thompson, Flin Flon, and OCN in September and October.



## CEDF Look North– A YEAR IN REVIEW (cont'd)

- Partnering with Bit Space Development, Manitoba Northern Sector Council, Vale, and HudBay to create a Northern Mining Promotional Video.

**HUDBAY**



**BSD.**

- In partnership with Tataskweyak Cree Nation, facilitating the establishment of a local sawmill to address local housing needs.



## **CEDF Look North– A YEAR IN REVIEW (cont'd)**

- ❑ In partnership with Churchill Regional Economic Development (CRED), North Central Development, Thompson Chamber of Commerce, and Sub-Zero North, CEDF is in process of creating the sustainability plan for the Winter Weather Testing Centre of Excellence to lead the creation of the winter weather testing industry in the Thompson region.



- ❑ In partnership with New Media Manitoba and the Northern school boards (Mystery Lake, Frontier School, Flin Flon, and Kelsey) in August delivered a digital media game camp for students in grades 7 to 9.



## CEDF Look North– A YEAR IN REVIEW (cont'd)

- ❑ In partnership with UCN, Mining Academy, Vale, WEM, and Employment and Training, the delivery of Wilderness Safety courses in the communities of Thompson (in process), Wabowden (completed) and Tataskweyak Cree Nation (by end of 2020 or in 2021).

The Wilderness Safety course provides, combined with Lifeskills and Essential skills training, prepares individuals to gain employment in the natural resource industry and is a prerequisite for Individuals who want to go onto Prospector training.



## CEDF Look North– A YEAR IN REVIEW (cont'd)

- In partnership with Outland, Sustainable Forestry Initiative, and the Arctic Gateway Group, supported the Outland Youth Employment Program (OYEP) 2020.

There were a total of 18 youths participating from 11 First Nations in Manitoba. The 6-week program combines remote (due to COVID) with face-to-face learning at Egg Lake in August. The training is focussed on providing capacity building and experience in careers in the natural resources industry.

- 80% of OYEP participants complete high school compared to 63% of Indigenous youth in the same age group.
- 39% of OYEP participants complete some form of university compared to 13% of the Indigenous population.





## CEDF Look North– A YEAR IN REVIEW (cont'd)

Supporting the Outland Youth Employment Program (OYEP) 2020 (cont'd).

**Neepin Cook**, Misipawistik Cree Nation

1<sup>st</sup> Year OYEP Participant

*"I learned a lot throughout all of the camp, but what has really stuck with me is that letting people in to your life can be really good for you and also to keep an open mind for new opportunities.*

*I learned I really like working in the bush. I want to tree plant and take internships with forestry companies. OYEP gave me a new perspective and respect for forestry; I learned that there are companies that do care about traditional grounds in the industry. If I had my wish, I'd like to be hired in a city, but then also make my way back up north helping other communities.*

*Being productive everyday really helped my mental health. Being at camp just made me feel at peace with myself. I hope to attend Red River College to study Hydrology."*

## CEDF Look North– A YEAR IN REVIEW (cont'd)

Supporting the Outland Youth Employment Program (OYEP) 2020.

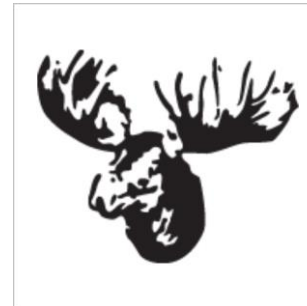
**Alyssa Young**, Chemawawin Cree Nation  
2<sup>nd</sup> Year OYEP Participant

*Through OYEP I learned that the forestry industry is considerate, not only about getting the job done, but also making sure they do their work safely and in a way that no people or animals may be disrupted. Forestry interests me the most because I always wanted a way to give back to the earth and through this I feel like I can. I think the ideal candidate for a job in forestry is someone who cares and is dedicated to making our forests better.*

*My favourite part of this year was the mining activities and going back and seeing our old tree planting block from last year!*

## CEDF Look North– A YEAR IN REVIEW (cont'd)

- ❑ Partnering with Rockcliff Metals in the process of conducting community consultations in the communities of Norway House Cree Nation, Norway House Community, Cross Lake Band, Incorporated Community of Cross Lake, Misipawistik Cree Nation, Town of Grand Rapids, Mosakahiken Cree Nation, Moose Lake Community and Wabowden for future Rockcliff Metals mining initiatives.



## CEDF Look North– A YEAR IN REVIEW (cont'd)

- ❑ **Fish Helpers Training Program** - In partnership with Western Diversification and Manitoba Commercial Fishers, providing opportunity for up to 50 individuals to get capacity building opportunity in the Manitoba Commercial fishing industry.
- ❑ **Non-timber Forest Products Harvesters Training Program** – In partnership with Western Diversification and Forbes Forest Finds to provide community-based training for individuals and groups to allow them to participate in the harvesting of non-timber forest products at the community level.





# CEDF Look North– A YEAR IN REVIEW (cont'd)





**Thank you for your attention and your participation. CEDF looks forward to our continued working relationship with our many stakeholders and community supporters. Over the next 4 days we look to getting feedback and ideas on the future focus of Look North.**

# Questions?