

PARTNERSHIPS AND ECONOMIC OPPORTUNITIES

VOL 1. 2024

LOOK NORTH

KÎWÊTINÔK ITÂPI

 **CEDF** LOOK NORTH

COMMUNITIES ECONOMIC DEVELOPMENT FUND



Ron D. Spence

Appointed Member of the Board

Band Councilor of Nisichawayasihk Cree Nation, Vice President of the Manitoba Trappers Association & Board member for the Fishery & Wildlife Enhancement Fund and Sustainable Forest committee



Doug Lauvstad

Chairperson of the Board

President and Chancellor of the University College of the North. Lauvstad previously served as Executive Director for the Northern Manitoba Sector Council, an association of the mining, forestry and energy sectors of Manitoba focused on workforce development. He has served on numerous other boards and committees including as Chair of the Northern Regional Health Authority Board of Directors.



Theresa Wride

Appointed Member of the Board

Originally from Norway House Cree Nation; Kinosao Sipi in Treaty 5 Territory, Wride has a long history of serving communities, both as a volunteer and in her career. She is a Career Counsellor and Job Coach, primarily working with Northern Indigenous peoples, as well as a globally renowned artist. Wride was a corporate director with a mining exploration company and worked seasonally as a tourism operator.

Her board and committee involvement includes the Manitoba Women's Advisory Council, Northern Health Region Indigenous Health & Human Resources Committee, and NorVA Centre Board on the Grant and Inclusion Committees.



Colleen Smook

Appointed Member of the Board

Mayor of the City of Thompson. She has worked in the construction industry, is owner of McCreedy Campground and has served on numerous boards in the community.



Rebecca Cianflone

Appointed Member of the Board

Executive Director of Community Futures Greenstone. Cianflone previously worked as a Business Analyst for Community Futures Triple R and Chamber Manager for the Altona and District Chamber of Commerce. She studied business administration at Red River College and her board experience includes the Northern Manitoba Tourism Advisory Committee, UCN Governing Council and the Flin Flon Women's Resource Centre.



Chuck Davidson

Appointed Member of the Board

President and CEO of the Manitoba Chambers of Commerce (MCC). Prior to joining the MCC, he spent close to a decade at the Winnipeg Chamber of Commerce as the Vice-President of Policy and Communications. Davidson served as Co-Chair of the Look North Task Force, and was born and raised in the northern community of Snow Lake.



Edna Nabess

Appointed Member of the Board

Edna Nabess was born and raised in Cormorant, Manitoba and is a proud member of the Mathias Colomb Cree Nation. Edna was taught the traditions of her Cree culture by her mother and is the founder and principal designer of Cree-Ations. Edna is a well-known artisan creating one-of-a-kind designs and is a founding member of the Manitoba Artist Showcase. Edna received the Aboriginal Business Service Network Award in 2009, the BMO Expansion and Growth in Small Business Award in 2017 and was a Recipient of a Canada 150 Medal that same year. In addition to the Winnipeg Police Board, Edna serves on the boards of Efficiency Manitoba, Manitoba Public Insurance, Manitoba Social Services Appeal, Manitoba 150 Celebration Committee and ATELAC. Edna was a candidate in the 2016 Provincial Election in the riding of Kewatinook.

Edna gives back to the community by participating in multiple charitable events and fundraising activities

BOARD OF DIRECTORS

MESSAGE FROM HON. IAN BUSHIE



Hon. Ian Bushie

Minister of Municipal and Northern Relations & Minister of Indigenous Economic Development

As the Minister of Indigenous Economic Development, I am honoured to share with you the Manitoba Government's vision and commitment to assist in realizing the full potential of northern and Indigenous communities and businesses for the betterment of all Manitobans, advancing Indigenous economic reconciliation and fostering inclusive economic growth within Manitoba.

With the inception of the Indigenous Economic Development ministry, for the first time in the Province's history, we have a department that is dedicated to advancing economic reconciliation so that all Manitobans can benefit from the contributions of Indigenous Manitobans. Through collaborative efforts with First Nations, the Red River Métis, Inuit, and partner organizations like the Communities Economic Development Fund (CEDF), we are steadfast in our commitment to removing economic barriers and creating equitable opportunities for Indigenous Manitobans.

We are considering new investments that underscore our dedication to fostering meaningful partnerships and co-developing strategies that empower Indigenous entrepreneurs and organizations. Central to this effort is the development of an Indigenous economic engagement strategy, which will serve as a roadmap for future programs and investments aimed at promoting economic development and employment opportunities for Indigenous Manitobans.

As we embark on this journey of economic opportunity, we remain guided by the principles of collaboration, respect, and meaningful engagement with Indigenous and northern communities. Together, we will unlock the vast economic potential of Indigenous-led initiatives, driving positive change and prosperity across our province.

I am particularly proud to acknowledge the pivotal role played by the CEDF in driving economic growth. CEDF's efforts, rooted in community engagement and collaboration, continue to unleash the economic power of northern Manitoba by embracing all perspectives and fostering inclusive growth.

I commend and congratulate the CEDF leadership for their dedication to advancing economic development in northern Manitoba and trust that the information shared in this magazine will provide valuable insight into their efforts and achievements. With your continued support and partnership, we will forge a path towards a more inclusive and prosperous Manitoba for generations to come.

MESSAGE FROM THE CEO



Chris Thevenot

CEO of CEDF

Partnerships and opportunities. When we were putting this magazine together, we asked ourselves what story did we want to tell. What is it about Northern Manitoba that people from outside the region, and even from within the region, don't know enough about. It is definitely not told often enough about who is working together on the many exciting transformative projects in the top portion of the province. Thank you to all the stakeholders, organizations, and businesses that provided content for this magazine to help us tell this story.

CEDF has been around for over 50 years. I am proud to be part of an organization that has played an underlying role in northern economic development for that period of time but I am also proud of how the CEDF team has adapted and evolved to the changing needs of the region, striving to define everyday what it means to be a valued stakeholder in the region.

CEDF has the privilege of being included in the newly formed provincial Department of Indigenous Economic Development. This opportunity will continue to reinforce the organization's focused effort on First Nation partnerships.

Economic reconciliation has many components and perspectives but I believe the people and the partnerships they forge will be part of the fuel driving us forward.

CEDF would like to acknowledge Manitoba encompasses Treaty 1, 2, 3, 4, and 5 Territory and communities who are signatories to Treaties 6 and 10. We acknowledge Manitoba is located on the Homeland of the Red River Métis. We acknowledge Northern Manitoba includes lands that were and are the ancestral land of the Inuit.

WHO WE ARE

Communities Economic Development Fund (CEDF) is a Manitoba Crown Corporation that has operated in Northern Manitoba since 1973. In March of 2019, CEDF was named by the province as the organization best suited to carry out the Look North Initiative because of its long-standing relationship to Northern Manitoba and its Peoples. CEDF has the depth of knowledge required and the right people to transform northern economies.

OUR VISION

Growing Northern Manitoba.

OUR MISSION

Through leadership in community building, creating connections and business development, we unleash the economic power of Northern Manitoba.

SIX AREAS OF FOCUS



NORTHERN MINERAL AND
OTHER NATURAL RESOURCE
POTENTIAL



INDIGENOUS ENGAGEMENT
AND PARTNERSHIPS



STRATEGIC INFRASTRUCTURE
INVESTMENT



HOUSING CHALLENGES
AND OPPORTUNITIES



ENTERPRISE ECO-SYSTEM
OF SUPPORT



EDUCATION, TRAINING AND
WORKFORCE DEVELOPMENT

THE LOOK NORTH INITIATIVE

Look North is a movement for northerners, by northerners to grow the economy in Northern Manitoba. It is a long-term vision and plan to unleash the economic potential of the north for generations to come.

The Look North initiative was set in motion by the Province of Manitoba in 2016, and is deeply rooted in the principle that the people of the north best understands their needs. Through extensive and ongoing engagement with both Indigenous and non-Indigenous communities, businesses, industry and labour leaders, a vision of growth and prosperity for Northern Manitoba that is inclusive of all perspectives has been developed.

EMPOWERING BUSINESSES AND COMMUNITIES FOR LONG-TERM SUCCESS.



Prairies Economic
Development Canada

Développement économique
Canada pour les Prairies



The Prairies are an economic and energy powerhouse that supports job creation, exports, and the Canadian economy. The Government of Canada recognized that and has grown PrairiesCan from the former Western Economic Diversification Canada, building on over 35 years of legacy to focus exclusively on advancing the unique economy of Alberta, Saskatchewan, and Manitoba.

Headquartered in Edmonton, PrairiesCan has expanded its footprint with twelve service locations across the three provinces. Manitoba has three service locations; Winnipeg, Brandon, and a new one in Thompson that opened its doors on August 4, 2022 – co-located with Communities Economic Development Fund (CEDF). Our regional officers are dedicated to the communities they serve and employ a community-based approach that provides services tailored to local needs.

We know a stronger Prairies region makes for a stronger Canada. That is why we work in collaboration with entrepreneurs, community leaders, Indigenous partners, other levels of government and stakeholders to help businesses and organizations to seize opportunities and generate good jobs. PrairiesCan delivers a wide range of federal initiatives across the Prairies and makes strategic investments to build on our regional competitive advantages. With our other roles of convenor,

pathfinder, and advisor, we provide a window on the federal government and use local knowledge to help shape national economic policy to assist our region to make a global impact.



PHOTOS BY PRAIRIES ECONOMIC DEVELOPMENT CANADA

As the world moves towards a net-zero economy, people living and working on the Prairies are taking action and are leading to take advantage of growing economic development opportunities. The Prairie provinces are emerging as trailblazers in this transformative journey capitalizing on cleantech, renewable energy, critical minerals development, value-added agriculture, and heavy electric vehicle manufacturing to name a few. Making this a success means everyone playing on the same team. On December 18, 2023, PrairiesCan, along with nine other federal departments launched the Framework to Build a Green Prairie Economy. This framework is a commitment to do better. It means more coordination between federal departments and stronger collaboration among all levels of government, including Indigenous governments, industry, businesses, and other sectors for the economy to build a prosperous and sustainable Prairie economy that leaves no one behind.

PrairiesCan brings a community-based approach to economic development in Manitoba. CEDF and PrairiesCan have collaborated on projects such as the Strategic Partnership Initiative and the Tourism Relief Fund to advance Indigenous participation in the mining sector and promoting the growth of Northern Manitoba's tourism sector. This builds on PrairiesCan's past partnerships with CEDF to respond to, and advance local economic development priorities. This includes support for the implementation of the Look North Action Plan and enabling small business adaptation by incorporating digital technologies during the COVID-19 pandemic.

PROVIDED BY PRAIRIES ECONOMIC DEVELOPMENT CANADA

To learn more about PrairiesCan, visit www.canada.ca/en/prairies-economic-development.html

FLIN FLON, A NORTHERN OASIS DISCOVER THE WATER & THE WILD



Nestled on the border of Northern Manitoba and Saskatchewan, Flin Flon captivates with a blend of natural beauty, rich history, and vibrant cultural spirit.

Tour the ancient exposed volcanic rock amidst the backdrop of the boreal forest and pristine lakes which set the stage for an array of outdoor activities and year-round adventures. From foraging, fishing and boating to water sports, skiing, snowmobiling, hiking, and paddling, as well as expansive northern lights viewing, Flin Flon is a true paradise for lovers of the great outdoors.

Step into history and culture amid a vibrant art scene. The Flin Flon Station Museum, housed in a former CN Rail station, unfolds tales of the City's mining and pioneering past. Indulge in the three-day Blueberry Jam Music Festival with local and out-of-town performers and the annual Culture Days festivities in the fall,

where Flin Flon continues to rank among Canada's top hosts for Culture Day Events. From cozy local coffee shops and restaurants to artisanal boutiques and scenic vistas, there's something for everyone to enjoy. Be sure to explore the grounds of Flinty's Campground and capture a moment with Manitoba's famous roadside attraction, Josiah Flintabatey Flonatin (say that 5 times fast!) – a treasure embodying the captivating tale of their town's name.

PROVIDED BY FLIN FLON DEVELOPMENT CORPORATION

Visit www.discoverflinfloncreighton.ca and their new Tourism Kiosk (special thanks to Look North and CEDF) for adventure inspiration and trip planning ideas – your gateway to an unforgettable Flin Flon experience awaits.

BRIDGING THE GAP: CONNECTING REGIONS OF NORTHERN MANITOBA WITH TECHNOLOGY

In our rapidly digitizing world, interactive tourism kiosks have become increasingly popular in visitor centers. Communities Economic Development Fund partnered with Qwick Tourist to develop the first of its kind regionally connected interactive tourism directory, connecting eight Northern Manitoba communities. The regional connectivity is the new exclusive piece and it is only accessible through a physical kiosk.

Designed specifically for the tourism industry, these standalone large-format touch kiosks make showcasing important visitor information easier than ever including local accommodations, attractions, events, restaurants, maps, coupons, visitor guides, and more.

Communities Economic Development Fund officially launched the Regional Tourism Kiosks on May 12, 2023, and support the following communities:

- Opaskwayak Cree Nation, MB
- Flin Flon, MB
- The Pas, MB
- Cranberry Portage, MB
- Thompson, MB
- Snow Lake, MB
- Churchill, MB
- Crosslake, MB



Opaskwayak Cree Nation, MB



Flin Flon, MB



The Pas, MB



Cranberry Portage, MB

Directory information can easily be updated in real-time and more importantly, these kiosks substantially reduce paper waste and printing costs by eliminating the need for printed brochures. This eco-friendly approach not only benefits the environment but also results in considerable savings for visitor centers.

The kiosks also offer advertising to small businesses who may not have the capacity to leverage online digital marketing. Shayla Tocher, Product Manager at Qwick Tourist shared that overall, the interactive digital is to help support stakeholders in the community by promoting what they have to offer and provide value to them in different ways.

If you have not had the chance to experience a kiosk yet, we encourage you to check one out in a community near you! If you would like your community included on the platform email admin@cedf.mb.ca or call 1-800-561-4315.



Thompson, MB

"It has been such a great opportunity to work with CEDF and the Communities of Northern Manitoba, not as clients but as partners."

SHAYLA TOCHER, PRODUCT MANAGER AT QWICK TOURIST

"We really appreciate all the help, direction, guidance and support, especially because we are a smaller group"

DEBBIE MCLAUGHLAN, CRANBERRY PORTAGE TOURISM COMMITTEE MEMBER

"First of all, it's easy to work with CEDF, that's just straight forward, tell them what you need and what you want to know and they will tell you everything that is available. If you need something and CEDF has it, it's all there. There's no guesswork to be done, they are just willing and able to help."

ROSANNA ANGELES, THOMPSON CDC



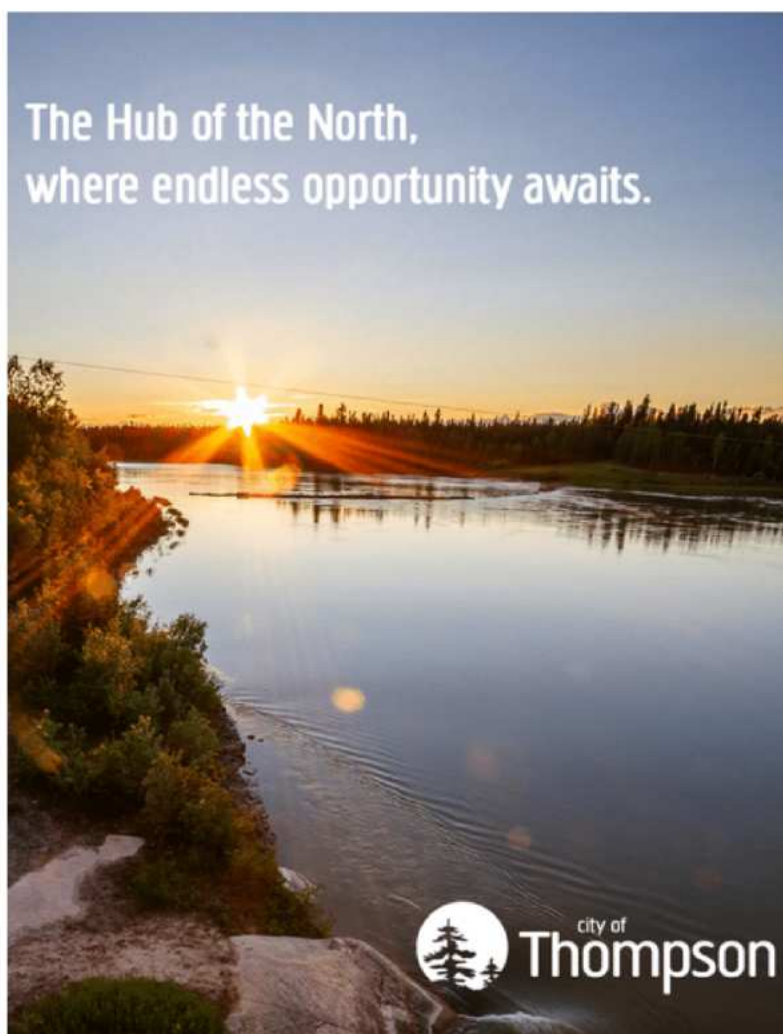
The new and improved Thompson Community Development Corporation (TCDC) is stronger than ever with a strategic plan that is aimed to fill in the gaps in Total Community Development. True to its commitment to improve the quality of life and opportunities in the Thompson region, this organization is gearing up for a robust engagement with the different sectors and to deliver a profound interaction to have complete understanding and relationship with the people for the long-term goals of visibly strong partnerships, thriving newcomers and old-timers in Thompson alike, and a citizenry that is proud to call Thompson their home. They are working to make TCDC a household name, be the wayfinding agency, and build relationships that will strengthen the community's resilience to challenges.

Currently, one of their bigger projects is the creation of the Thompson Tourism Committee, which aims to lead the city and the region to be a business and leisure destination of choice in the North. The mission is to promote the world-class amenities available in Thompson, enhance the products and services, and to improve the human and social capacities. This will be the building blocks of our tourism development to bring visitors near and far, support businesses, and generate revenue.

Community development work is best done by working from the ground up. The main goals are to increase community members' capacities, improve the relationships between agencies and communities, and effect change in the neighborhood or community level.

They are committed to improving the quality of life of the people of Thompson and they are fortunate to have partners who will support them.

PROVIDED BY THOMPSON COMMUNITY DEVELOPMENT CORPORATION



JAMMING IT OUT!

FLIN FLON'S VERY OWN MUSICAL GATHERING



PHOTOS BY BLUEBERRY JAM



The Blueberry Jam Music Gathering is located at the Flin Flon Tourist Bureau and Campground, off Highway 10A in Flin Flon, Manitoba. The free annual 3-day event hosting amateur and professional musicians alike taking place the weekend following August long. The festival is a major event for the area, attracting over 5000 attendees and involving more than 150 volunteers in 2023. In addition to the live entertainment, there are kid's activities, artisan markets, transportation, beer gardens and the famous Blueberry Wine bar.

In 2023, Communities Economic Development Fund provided assistance for Blueberry Jam's rebranding and marketing plan. The committee worked with K&M Consulting to update their logo and design new social media templates. They also worked with Flourish Leadership to create a strategic plan to enhance the festival and assist with succession planning.

Visit www.flinflonblueberryjam.ca to learn more.

Northern Manitoba Sector Council

"Northern Jobs for Northern People"

Offices in Thompson, The Pas, and Flin Flon

Phone: 204.778.6052

Email: glaycock@nmscouncil.ca

Website: nmscouncil.ca




The Manitoba Mineral Development Fund (MMDF) provides grants to support northern economic development and mining projects that create partnerships, increase local employment, and stimulate investment in Northern Manitoba.

MMDF.CA

MMDF is a \$20M provincial fund administered by the Manitoba Chambers of Commerce.






CANADIAN *Kraft Paper*

The Canadian Kraft Paper Industries Ltd. pulp & paper mill located in The Pas, Manitoba Canada is a producer of high performance unbleached extensible sack kraft paper. CKP product is sold to converters throughout the world for various demanding applications, such as cement bags and food grade applications. Papers are made with fibre from Canada's northern boreal forests and this slow growing fibre provides tremendous strength characteristics for CKP papers – the best available in North America.

The framework of legislation, regulation, and voluntary certification standards that they operate within ensures that the forests we manage today will contribute to future generations and to the communities where we live and operate..

As of July 2018, Canadian Kraft Paper Industries (CKP) forest services have been provided by Nisokapawino Forestry Management Corporation (NFMC), a company owned equally by CKP and Nekoté Limited Partnership (owned by seven Swampy Cree First Nations). As a forest services provider, NFMC is responsible for planning, forest renewal, and certifications the Manitoba government and Communities Economic Development Fund are partnering with CKP to explore opportunities for transitioning to a greener economy in Northern Manitoba. Funding support of \$90,000 from the Manitoba Government, \$75,000 funding support from CEDF and a \$130,000 investment from Canadian Kraft Paper Industries Ltd., CKP will examine options for enhancing the use of biomass to generate energy at the Kraft Mill in The Pas.

To learn more about Canadian Kraft Paper, visit www.canadiankraftpaper.com

PROVIDED BY CANADIAN KRAFT PAPER

PHOTOS BY CANADIAN KRAFT PAPER

THOMPSON REGIONAL AIRPORT

& AREA 55 ADVANCED COLD RESEARCH FACILITY

PROVIDED BY THOMPSON REGIONAL AIRPORT AND AREA55 ADVANCED COLD RESEARCH FACILITY

The Thompson Regional Airport stands as a cornerstone of regional connectivity, serving as a vital gateway for both passengers and cargo as well as home to Area 55, Canada's newest advanced cold research facility. The Thompson Regional Airport is a major hub and lifeline serving a catchment area of over 65,000 residents in 37 northern and remote communities.



NEW AIRPORT RENDITION PROVIDED BY THOMPSON REGIONAL AIRPORT AUTHORITY

In 2007, it was determined that the airport and surrounding infrastructure needed critical repair as the structures were built on melting permafrost. A major redevelopment was needed for this crucial infrastructure to continue its vital operations. After years of meticulous planning and groundwork, the vision for a new terminal is now materializing.

This redevelopment initiative is a comprehensive \$125-million endeavor, encompassing various critical components such as:

- New 40,000 ft² Air Terminal Building
- New water treatment facility (completed in 2020)
- Extensions of sewer lines connecting the new terminal to an expanded lagoon
- Parking facilities,
- Installation of lighting systems
- Construction of service/access roads
- Enhancements to airside infrastructure.

Together, these projects signify a concerted effort to not only address immediate structural concerns but also to enhance the overall functionality and resilience of the airport, ensuring it meets the evolving needs of the community and region it serves.

In 2023, the Thompson Regional Airport confirmed funding through various partners including the Province of Manitoba, Disaster Mitigation and Adaptation Fund and the Canada Infrastructure Bank's Indigenous Community Infrastructure Initiative program. Construction is scheduled to be complete in the spring of 2025 and operational by the fall.



In addition to the development of the new airport, the Thompson Regional Airport is diversifying the aviation landscape. In February 2023, the Thompson Regional Airport Authority purchased Ford's Global Cold Weather Testing facility and assets located at the airport to develop a new winter weather testing campus. The facility includes a 19,000 ft² heated shop, 3,400 ft² cold soaking chamber, offices, and meeting space as well as secured parking and storage areas. The new facility branded "Area 55" is now a leading advanced cold weather research facility for year-round testing specializing in cold weather testing due to the nature of the climate in Thompson.

In addition to the testing opportunities, the new facility offers the advantage to their northern community and stakeholders to accommodate other needs such as a training/research centre, product demonstration or competition venue for short or long-term capacity.



PHOTOS BY AREA55 ADVANCED COLD RESEARCH FACILITY

With the ongoing construction and development of the new airport terminal and Area 55, the future of the Thompson Regional Airport shines with promise. These initiatives signify a commitment to innovation, growth, and sustainability, positioning the airport as a vital hub for both transportation and research in the region. The upgraded facilities will not only enhance connectivity and operational efficiency but also attract new opportunities for economic development, workforce development and collaboration. As Thompson Regional Airport continues to evolve and expand its capabilities, it is poised to play an even more significant role in driving progress and prosperity for Northern Manitoba.

The Communities Economic Development Fund (CEDF) has been instrumental in supporting the Thompson Regional Airport through various avenues, demonstrating its commitment to fostering regional growth and infrastructure development. Notably, CEDF has played a pivotal role in facilitating connections with funders, enabling the airport to secure crucial financial support for its redevelopment initiatives. Additionally, CEDF has been a supporter of the winter weather testing initiative since its inception in 2019, recognizing its potential to enhance the airport's capabilities and attract new opportunities for research and innovation. This collaborative approach aligns with the objectives outlined in the Look North Report, which emphasizes the organization's commitment to supporting long-term infrastructure plans that promote economic development and prosperity in the north. Through its strategic investments and partnerships, CEDF continues to play a vital role in shaping the future of the Thompson Regional Airport.

To learn more about Thompson Regional Airport Authority and Area55 Advanced Cold Research Facility, visit:

www.area55.ca

www.thompsonairport.ca

OUR MISSION

Through leadership in community building, creating connections and business development we unleash the economic power of Northern Manitoba.



 **CEDF**
Communities Economic Development Fund

LOOK NORTH
Visit and Invest in Northern Manitoba,
a region rich in resources and experiences.

FLY NORTH FOR ADVENTURE



With the support of PrairiesCan Tourism Recovery Fund, CEDF partnered with Calm Air on a marketing campaign to showcase the beauty of our northern region. All inclusive winter packages including flights, accommodations, meals and top-rated excursions were offered in the winter of 2023.

Packages included the opportunity to dine on moose stew, experience a sweat lodge, snowmobile across Athapapuskow or enjoy a six-course meal under the northern lights. Other packages offered snow shoeing, dog sledding or a one-of-a-kind ride on a Tundra Buggy. All of these and more were part of the northern experience.



LET'S HEAR IT FOR ACTIVE NATURE TOURISM!

AURORA Sacred Healing is a Resource Tourism Outfitter based out of Cranberry Portage, Manitoba that offers land-based experiences to help people build outdoor connections and provide opportunities to strengthen their Mind-Body-Spirit connection to themselves and to the Land.

Adrianna Sawchyn and Richard Danielson, the Directors of AURORA Sacred Healing have established cooperative partnerships with Indigenous healing practitioners and land-based outfitters to offer northern adventures, educational & wellness expeditions and so much more.

One activity they offer throughout the winter are interpretive snowshoe expeditions to promote wellness, fitness and connecting to the land. Adrianna shared, "as an environmentalist, I believe that if people have a chance to connect more with the land, they will be more sensitive to issues like climate change and biodiversity issues and snowshoeing is an excellent way to build that connection".

As part of the "Fly North for Adventure", AURORA Sacred Healing engaged with Calm Air and multiple northern tourism partners to provide The Pas Healing Experience, an immersive three-day learning experience.

This northern tour package provides insight into Indigenous and Cree culture, traditional trapping, wilderness survival, yoga, meditation, indigenous cuisine and more.

CEDF and PrairiesCan provided financial assistance for snowshoe equipment to make this experience possible.

To learn more about AURORA Sacred Healing, visit: www.aurorasacredhealing.net.





Proudly Indigenous and northern community owned, Arctic Gateway Group operates a safe, reliable, and sustainable, integrated transportation system connecting Manitoba and the Arctic to the world. Bringing economic value and opportunities through the operation of the Hudson Bay Railway and the Port of Churchill. AGG's culture is rooted in the values of respect, accountability, collaboration, and sustainability. Indigenous ownership, leadership and participation is central to their identity and approach. Through investing in their assets and people, they aim to build resilience that will underpin economic activity, employment and growth in the region in which they operate.

The critical infrastructure investments being made in Northern Manitoba by the government of Manitoba and Canada will further solidify their diversification efforts and lead to greater economic and employment opportunities for Indigenous peoples and northerners alike. CEDF & Look North is proud to collaborate as we all collectively work towards a bright future of the region.

To learn more about Arctic Gateway, visit www.arcticgateway.com

PROVIDED BY ARCTIC GATEWAY



ARCTIC GATEWAY



PROVIDED BY ARCTIC GATEWAY



PHOTO BY RANDY WHITBREAD



PHOTO BY NISICHAWAYASIHK CREE NATION DEVELOPMENT CORP

NELSON HOUSE DEVELOPMENT CORPORATION BUILDING A BRIGHTER FUTURE

The Nelson House Development Corporation (NHDC) was created by Nisichawayasihk Cree Nation (NCN) Chief and Council in 1992 to help in fulfilling its vision of sovereignty, self-sufficiency and self governance. All activities of the Development Corporation aim to build capacity, create employment for NCN Citizens and generate revenue to fund NCN programs and services.

The NHDC currently oversees many businesses which are wholly owned by NCN and fully self-sufficient, with no provincial or federal funding. These businesses offer amenities, goods and services to the community, provide employment for Citizens, and create profits – 100% of which are received directly by NCN and are used to fund and support many NCN programs and services.

The NHDC is governed by NCN Chief and Council. All profits are put into capital or business development or NCN government-run programs. We frequently meet with potential business developers, financial institutions, potential employees and student program applicants. They are open to partnership opportunities with organizations, communities and other First Nations.

The Nelson House Development Corporation looks forward to building and growing NCN economic development and always welcome new ideas or new business development plans. Call them anytime to explore opportunities for the future.

**PROVIDED BY NELSON HOUSE
DEVELOPMENT CORPORATION**



Nelson House Development Corporation
Box 429 Nelson House, MB R0B 1A0
Phone: 204-484-2225



Manitoba Keewatinowi Okimakanak Inc.



Grand Chief Garrison Settee
Manitoba Keewatinowi Okimakanak Inc,

Economic development is just one of the areas we support and it's the first step to achieving self-determination. Self-sufficiency in turn generates knowledge, employment, education, skills, and promotes entrepreneurship. Becoming entrepreneurs means we can have member-owned businesses that meet the unique traditions, needs and vision of the region. Partnerships with neighboring communities, businesses, and various levels of government on a nation-to-nation basis are immeasurable.

Thus, we must work to encourage and support more endeavors such as the recent Seal River Watershed MOU signed in January 2024 with the Government of Canada and the province of Manitoba designed to work together with First Nations on a potential Indigenous protected and conserved area. The first of its kind in Manitoba that will take First Nation knowledge and input, while also creating employment and jobs that match communities and their cultures.

To working with the Norway House Cree Nation on their annual Reclaiming Our Future Economic Development Youth Conference that is set for later this summer. Bringing together three hundred 15 – 30-year-olds from across Manitoba. Empowering youth with the opportunity to learn business skills, hear from a diverse mixture of keynote speakers and build relationships with potential mentors will have a lifelong impact for attendees and communities.

Grand Chief Garrison Settee says “The future for economic development is bright. The path to self-determination is within sight. Having strong independent Nations will only enhance our communities and its citizens. It's something that for far too long we've been told was impossible, but we are taking matters into our own hands and empowering our nations.”

**PROVIDED BY MANITOBA KEEWATINOWI
OKIMAKANAK INC**

“Manitoba Keewatinowi Okimakanak Inc. strives to advocate and promote the 26 Northern First Nations we serve.”

——— MANITOBA KEEWATINOWI OKIMAKANAK INC.



PHOTOS BY BARREN LANDS FIRST NATION

“ Barren Lands First Nation appreciates CEDF’s financing support for the purchase of construction equipment which will be used in winter road construction and other local contracts. This will help create local training opportunities and jobs.”

———— CHIEF MICHAEL SEWAP



Barren Lands
First Nation

CRITICAL DISCOVERIES

Critical Discoveries is a geological consulting company focused on early-stage exploration for critical mineral properties within Canada. Our team is a small group of Manitobans who are passionate about mineral exploration with an interest in furthering responsible development in Manitoba.

Since our inception in 2022, we blend geological expertise and partnerships with local exploration and drilling service providers to tackle exciting projects for our clients in areas brimming with potential. In addition to consulting services, we also offer project generation and property acquisition.

Our company is founded by Aaryn Hutchins, who is dedicated to advancing the industry while advocating for diversity and inclusion. Her most recent role was at Tanco Lithium Mine in Manitoba. Aaryn also holds the position of Chair of Women in Mining MB, where she serves as a mentor and guide to young mining professionals. Her collaboration with multiple groups including the Manitoba Prospectors and Developers Association and the Manitoba Geological Survey further highlight her passion in the mining industry. Aaryn's career as a young geoscientist has benefitted from receiving funding from the Communities Economic Development Fund (CEDF) in 2021.

The mineral exploration sector in Manitoba plays a pivotal role in fostering a thriving and resilient economy. Critical Discoveries aims to uncover opportunities in mineral-rich areas, and we are invested in Northern Manitoba's economic potential. However, our commitment goes beyond industry partnerships. With our collaborative approach we aim to empower local companies, communities, and individuals throughout the province. Together, we can forge a prosperous and sustainable future.

PROVIDED BY CRITICAL DISCOVERIES



CEDF **LOOK NORTH**
 Lead Entity For The Delivery Of Visit and Invest in Northern Manitoba, a region rich in resources and experiences.

@cedfmanitoba
 Communities Economic Development Fund
 @CEDFMB
 Communities Economic Development Fund

STAY CONNECTED WITH US.
 From local news to economic development in Northern Manitoba.
www.cedf.mb.ca

Women IN MINING MANITOBA

WIM Manitoba is a non-profit organization with the goal of promoting inclusivity and diversity in the mining & resource sectors and adjacent industries.

We are particularly focused on providing mentorship and volunteer opportunities for students and recent graduates, to help bridge the gap between professionals and those entering the industry.

Join our chapter and benefit from:

- Networking events
- Outreach programming
- Speaker Series Lunch and Learn
- Volunteer Opportunities
- Mentor & Mentee Opportunities
- Local partnerships & Initiatives that benefit our industry

Become a member or find more information at wimmanitoba.com

**Individual memberships from \$10-25*



Incorporated in 1971, the Northern Association of Community Councils is a non-profit group representing the interests of 48 northern and rural Community Councils under the jurisdiction of Indigenous Reconciliation and Northern Relations (IRNR). NACC promotes and facilitates sustainable community development by:

- Encouraging the development of local services on behalf of member communities;
- Ensuring that physical, social, and economic development in our communities remains a priority for the government;
- Providing information for the sustainable use of natural resources;
- Coordinating and consulting on community-based projects and promoting self-sufficiency;
- Acting as a channel for effective communication and cooperation between communities, business, and governments;
- Providing associates with information and opportunities through the annual conference for the resolution of community issues.

NACC's goal is to promote and encourage wherever possible the development of local government; and to assist in the improvement of services and the physical, social and economic development of all member northern communities of the NACC.

If you would like your NACC Regional Chairperson to visit your community or attend a meeting, please contact the NACC office via phone at 1-(204)-947-2227, toll-free at 1-888-947-6222 or by email at execdirector@naccmanitoba.com

PROVIDED BY NORTHERN ASSOCIATION OF COMMUNITY COUNCILS

NORVA inc.



ART GALLERY

**Public Exhibits
Classes • Paint Nights
Local Artists • More!**

**177 Green St
687 4237**



QWICK TOURIST
Connecting Communities Through Tourism

Interactive Solutions That Support Every Stakeholder In Your Visitor Economy

CONNECT WITH US
support@qwicktourist.com
qwicktourist.com
 604-910-4070

Flin Flon, Creighton, & Denare Beach

THE WATER & THE WILD



PHOTOS BY FLIN FLON DEVELOPMENT CORPORATION

Embraced by the boreal forest on the Saskatchewan-Manitoba border, Flin Flon, Creighton, and Denare Beach entwine a tale of natural beauty and local charm.

Here, you can revel in year-round outdoor adventures, partake in the thrilling pursuit of premier trophy fishing, and immerse yourself in the rich tapestry of arts, culture, and heritage. With each changing season, the landscape transforms into a playground for outdoor enthusiasts, offering endless trails and waterways for exploration and adventure!

For a truly immersive experience, paddle along the historic canoe routes and traverse the water pathways that served as vital routes for Indigenous people, fur traders, explorers, and prospectors.



Savour the essence of days gone by with a shoreline fish fry and be sure to visit their three local museums – each telling their own story, bringing the richness of their history to life.

For those seeking inspiration and trip-planning guidance, visit www.discoverflinfloncreighton.ca or view their Tourism Kiosk at one of the partnering locations (special thanks to Look North and CEDF).

PROVIDED BY FLIN FLON DEVELOPMENT CORPORATION

Serving Red River Métis living across northern Manitoba.

National Government of the Red River Métis

Visit mmf.mb.ca to learn more about our government programs and services in Manitoba and **beyond borders.**

MPDA
MANITOBA PROSPECTORS AND DEVELOPERS ASSOCIATION

MANITOBA'S LEADING VOICE ON MINERAL EXPLORATION, CRITICAL MINERALS, AND THE NEW GREEN ECONOMY

BECOME A MEMBER TODAY!

Help shape the future of Manitoba's mineral exploration and extraction industries. Membership is a great way to learn about key topics affecting the industry and to unlock networking and professional development opportunities, special events, speakers and newsletters.

MPDA's objective is to develop productive and efficient ways of working with our industry and community partners, so that Manitoba becomes one of the most attractive places to invest in the mineral business.

To view more info on upcoming and past events & initiatives visit our website:

MPDA.CA



PISEW FALLS

FOR THE LOVE OF THE GAME!



Golf is a game for a lifetime. What other game allows players of different skill levels, of different generations, or different amounts of experience to get out together and enjoy a day in nature? The game of golf continues to have a positive financial, tourism and social impact in communities across Northern Manitoba. Golf-lovers in the North may have a limited window to enjoy the numerous golf courses around the region, but what they miss in the colder months, they make up for during the long summer nights.

As part of the Tourism Recovery Fund initiative, CEDF partnered with Northern Manitoba golf courses to assist with the development of a multi-year marketing plans for four of Northern Manitoba's golf courses:

- Phantom Lake Golf Course
- Halcrow Lake Golf & Country Club
- Snow Lake Golf & Country Club
- Thompson Golf Course

Each course did a self-assessment to identify their strengths, common barriers and visitor's needs to develop a 3-year marketing plan. The next step will be to work together to build a regional marketing strategy to promote golf in the North for golf enthusiasts living in the region and those who are planning to visit.



PHOTO BY THOMPSON GOLF CLUB



At University College of the North, you can earn a degree, learn a trade, or upskill your education. This flexibility is crucial for the future workforce.

Join our vibrant community of learners.



University College of the North

UCN.CA
HERE YOU CAN.

Join Our Team

OPEN POSITIONS

- Senior Mechanical Engineer
- Welder
- Millwright
- Electrical Engineer
- Labour Relations Advisor
- Product Quality Coordinator
- Relief Supervisor (P&T) – Production Supervisor - Full time & Permanent
- Relief Supervisor (Steam and Recovery) - Full time & Permanent
- Steam Chief
- Laboratory Supervisor
- Asset Integrity Engineer
- Process Engineers
- Environmental Coordinator (12 - 18 month term)- Open to Students
- Forestry Assistants (Term role for Summer 2024)
- IT Support Technician (Term role)
- Various Summer Students Positions (Term role for Summer 2024)

All roles onsite in The Pas, Manitoba

APPLY HERE



<https://www.canadiankraftpaper.com/careers>



PICKLED LOON KITCHEN

ONE OF A KIND: EXPERIENTIAL TOURISM EXPERIENCE

Lyn Brown, Owner/Operator of Pickled Loon Kitchen (PLK) is an experiential tourism operator and culinary artist whose business offers experiential tourism adventures in and around Flin Flon, MB. She offers immersive adventures, culinary education, catering and foraged food products using plants, roots and trees harvested locally from the boreal forest.

Lyn received support from CEDF through the Look North initiative which assisted her in crafting a detailed business plan including costing and pricing her offering, marketing and connecting her to a consultant that created her website, promotional materials and assisted with online presence.

To learn more about this experience, visit www.pickledloon.ca



PHOTOS BY PICKLED LOON KITCHEN

The PAS OCN
MANITOBA, CANADA

YOUR NORTHERN ADVENTURES AWAIT

We are The Pas, Opaskwayak Cree Nation, and the Rural Municipality of Kelsey: three distinct yet interconnected communities on the ancestral lands of the Cree, Dené, Red River Métis, and Oji-Cree.

GET INSPIRED

www.discoverthepasocn.ca

When your heart needs a rush

WEKUSKO FALLS PROVINCIAL PARK
54.78979° N, 99.97235° W

Whether it's the call of adventure that draws you in or the vast untouched wilderness waiting to be discovered, you'll feel a rush of excitement when you explore northern Manitoba. Hike, paddle, camp or stay in a cabin or at a lodge—however you choose to explore Manitoba's north, you'll leave exhilarated by what you found here.

Find heart-stirring itineraries at travelmanitoba.com/northern-manitoba

MANITOBA
CANADA'S HEART IS CALLING



Vale Base Metals is strengthening our business in Thompson to support the global demand for critical minerals that are driving the energy transition, while making sure that success and prosperity is shared by our employees, our community, and our region.



Powering up the new 350 Return Air Raise for the first time!

Last fall, our Thompson Mine Extension Project (TMEP) brought its first new return air raise online: a \$25M project possible only through the effort of more than 100 team members. It's one of two air raises being constructed as part of the TMEP Phase 1: a \$150 million investment in the future of Vale Base Metals' Manitoba Operations. The project includes new ventilation, electrical upgrades, and backfill facilities that will allow us to ramp up our operations in Manitoba's T3 mine and build a business case for Phase 2.

We've also had great conversations this year with our provincial and regional leaders to help reimagine how we offer education in the north.

We want to help create opportunities for people who live here and help them find prosperity through well-paying jobs and transferable skills in our industry, supporting a sustainable economy for the region.

Part of that strategy is our Miners-in-Training program, a new onboarding program for underground hires with no experience in mining or heavy industry. It's their first step in building a new future for themselves in the field, and we're excited to expand that model in the future.

In 2023, we were also proud to see our mine rescue team take home the provincial championship for mine rescue in Manitoba, the culmination of hard work and dedication that underscores the team's commitment to keeping our employees and our community safe.



PHOTOS BY VALE BASE METALS

Our 2023 Mine Rescue Champions!

This is a big moment in time for mining, for Manitoba and for the north: it's an opportunity to transform the future and make a better world for everyone. We're excited for you to join us on the road ahead!

PROVIDED BY VALE BASE METALS



ROUND THE BEND FARM



THE PAS, MANITOBA, CANADA
Phone: 204-623-1954 | Email: contact@roundthebend.ca

Round the Bend Farm is a small family farm and experiential tourism operator located just west of The Pas, Manitoba; a community richly steeped in tradition, honoring their ancestors and respecting the land.

Round the Bend Farm practices holistic and sustainable farming to provide fresh local produce for their customers and also offer exclusive tours and specialized experiences highlighting their bison, pastured pigs, and poultry operations. Guests have the opportunity to immerse themselves in the vibrant life of a Northern Manitoba farm and forge a meaningful connection with the land and the area's agricultural heritage.

Round the Bend Farm took part in the experiential tourism training and also received assistance with purchasing a large prospector tent for visitors to warm up, tell stories and cook a meal over a fire for an authentic northern experience. Shawn and Edith are excited to continue building their business and acknowledged CEDF for helping to make it possible.

In addition to their standard tours, they also offer specialized experiences tailored for larger groups and educational institutions. Visit www.roundthebend.ca for more information.



PHOTOS BY ROUND THE BEND FARM

Top Photo



PHOTO BY TAYLOR KITTLE



**BAKERS NARROWS
SCENIC TOWER
FLIN FLON, MANITOBA**

PHOTO BY TAYLOR KITTLE

PHOTOS BY OPASQUIA TRAILS

POV: OUT ON THE BOARD WALK



Trails are plentiful around The Pas, Opaskwayak Cree Nation and the RM of Kelsey. The Tri-area is vast and is host to so much untouched wilderness just waiting to be explored.

Opasquia Trails Inc. is a non-profit charitable organization dedicated to building and maintaining the Grace Lake boardwalk. In 2023, Opasquia Trails Inc. celebrated the grand opening of the new 600 meter-long, floating boardwalk section of the Boreal Trail along the shores of Grace Lake located just east of The Pas.

The area is home to many species of birds, animals and plant life. Opasquia Trails is working hard to safeguard these areas while still creating access points for visitors to explore and observe the beauty that surrounds Grace Lake.

CEDF and PrairiesCan provided financial assistance towards the new floating dock as part of PrairiesCan's Tourism Recovery Fund

OPASQUIA Trails

With more than 12,000 visitors last year, they support the committee's vision that this project has the potential to have positive economic impacts in the area.

As shared by Al McLaughan, a board member of Opasquia Trails Inc. "It's not just a static facility, it is a constantly changing and evolving facility that in the future may spawn some small businesses, or be used by outfitters taking visitors out on the trail, increasing economic development in the area."

Grace Lake's new boardwalk section stands as a shining example of what can be achieved when a community comes together with a common goal – to preserve, enhance, and enjoy the beauty of our natural surroundings.

To learn more about Opasquia Trails, visit www.opasquiatrails.ca



Community Futures Cedar Lake Region

**INVESTING
IN OUR
COMMUNITIES**

Growing communities one idea at a time

<https://cfmanitoba.ca/cedar-lake>



flinflondistrictchamber.com

"WE SUPPORT THE NORTH"
**Flin Flon & District Chamber
of Commerce**

Promoting & Improving Trade & Commerce
through the Economic, Civic
& Social Welfare of the District.

HERE YOU CAN.



PHOTOS TAKEN BY NUNO PEREIRA



YOU CAN. UCN.CA



UCN LINKAGES CONFERENCE 2024

UCN's Linkages Conference (5th Annual) was held in The Pas in November 2023. It was a remarkable success with representatives from local and provincial government, industry, economic development agencies, and large employers in the same room discussing economic development opportunities in Northern Manitoba.

UCN expanded its Linkages Conference to Thompson February 13-14, 2024. This conference was also a success, opening discussion and reflection on northern economic development. The Linkages Thompson event focused on innovation, people, partnerships, language and culture. It was a valuable networking opportunity to discuss challenges, opportunities and showcase the strengths of Northern Manitoba and how together, we can thrive. Key discussions in Thompson centered on sustainable practices in the mining sector, community engagement, cross-cultural education, Indigenous culture commitment, and the unique needs of each community.

The overarching theme emphasized understanding and embracing the truth and reconciliation of Indigenous communities, learning from elders, and promoting collaboration among industry, government, and Indigenous communities from the outset.





The Freshwater Fish Marketing Corporation (FFMC) is a self-sustaining Crown Corporation established in 1969, located in Winnipeg. Our mission is to maximize long-term returns to commercial fishers through securing supply, creating an orderly market, promoting international markets, and increasing trade in freshwater fish.

Most Northern Manitoba commercial fishers are Indigenous, whose knowledge and traditions have been passed down through a long line of ancestral fishers. Many started learning the commercial fishing craft at a young age from their families. Fishers follow generational family traditions for harvesting wild-caught fish and are important suppliers of sustainably harvested quality fish to FFMC. Main species of fish harvested from these northern waters include Walleye, Lake Whitefish, Tullibee, Northern Pike, Mullet, and Lake Trout, as well as Northern Pike, Tullibee, Lake Whitefish and Carp roe.

In 2023, Northern Manitoba fishers delivered nearly 2 million kilograms of fish to FFMC. Northern Manitoba fishers play a crucial role in the freshwater fishing industry in Manitoba, representing about 20% of FFMC's sales.



**Robbie Hallkett with
Lake Trout**



**Dennis and Keith Anderson
holding Northern Pike from
Leaf Rapids**

The Island Lake region is FFMC's most eastern Manitoba fishing community, with up to 30 fishers catching 30,000 kilograms of Walleye annually. The harvested fish is air flown to Winnipeg for processing at FFMC.

FFMC's most northerly Manitoba fishing community is Brochet with a long history of fishing on Reindeer Lake. Fishers transport their fish by boat on a 4-hour roundtrip along Reindeer Lake to the Kinoosao packing station at the Saskatchewan border during the summer or by truck on winter roads to FFMC's Leaf Rapids packing station for consolidation and final transport to Winnipeg. About 25 – 30 seasonal fishers deliver approximately 70,000 kilograms of fish comprised mostly of Lake Whitefish and Trout.

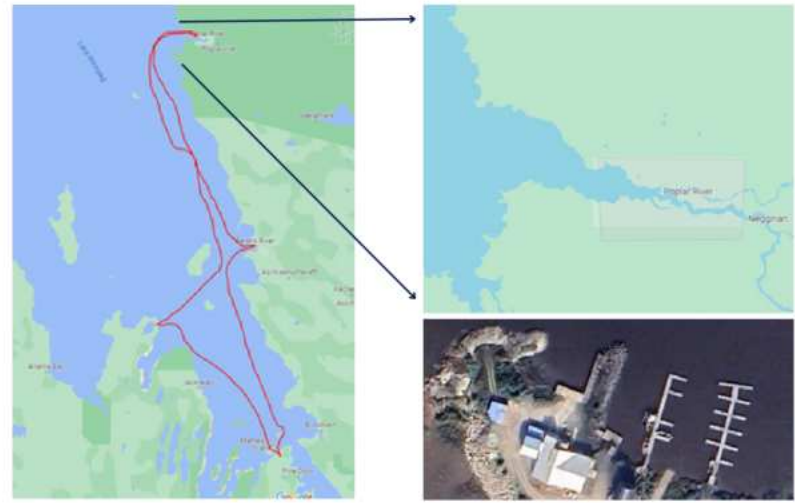
At the northern end of Lake Winnipeg is the large fishing community of Norway House. The Norway House Fishermen's Co-op (NHFC) was established 62 years ago by local fishers and FFMC has been a part of NHFC's journey for 55 of those 62 years. NHFC's long-standing achievements are the result of each member's commitment to success and a shared desire to work together. Fishing traditions play an integral role in Indigenous culture and this group of northern Manitobans continue to work together to ensure that their time-honoured fishing practices benefit Norway House fishers and the overall community for future generations. NHFC is the largest commercial fishing operation in Manitoba with over 50 fishers harvesting approximately 500,000 kilograms of Walleye and Lake Whitefish annually. NHFC is an economic engine in Norway House that contributes to job creation and economic development.

NHFC also operates additional businesses including two fish packing plants (Playgreen and Whiskey Jack), a barge for hauling fish, a research station, gas station, lumber yard, and a restaurant. The Co-op also contributes to local food security by sharing the fish they catch within the community.



Aerial view of Norway House

Negginan fishing station at Poplar River on the north east shore of Lake Winnipeg is another large fishing community harvesting nearly 200,000 kilograms of fish annually from 36 fishers. The fall is peak Lake Whitefish fishing season and this First Nation community has moved forward with an eco-certification preassessment under the Marine Stewardship Council (MSC) for Lake Whitefish. When Poplar River becomes MSC certified, it will become the first eco-certified Lake Whitefish population globally certified! Poplar River is only accessible by water or air during the open water season, and by winter roads during the winter. FFMC's barge completes twice weekly trips across Lake Winnipeg to pick up harvested fish from Poplar River, Berens River, and McBeth Point. The barge is critical for northern fishers and plays a key role in front hauling supplies such as food, gas and building materials to Poplar River in the summer. The barge is docked in Hnaua harbour and completes a fish pick up circuit between these 3 remote communities, dropping off fish at Islandview Harbour near Matheson Island (also know as "end of the road"), where the fish is then transported by truck to FFMC.



MV Poplar River barge travel route across Lake Winnipeg

Negginan (Poplar River) fishing station

On the north end of Lake Winnipegosis is the large fishing community located in Dawson Bay. This group of mostly family fishers harvest over 500,000 kilograms of fish annually in both the summer and winter fishing seasons, consisting of Walleye, Lake Whitefish, Mullet, and Northern Pike, including Northern Pike and Lake Whitefish roe. Like many remote northern communities, commercial fishing is vital to Dawson Bay.

FFMC plays a crucial role in the commercial freshwater fishing industry in Manitoba, as well as in Saskatchewan, the Northwest Territories, and in Ontario. FFMC's quality products from northern Indigenous commercial fishers are recognized in over 15 countries around the world. FFMC depends on northern Manitoba fishers and continues to partner and build on existing relationships and the insight and skills of Indigenous fish harvesters to advance Indigenous fishery enterprises

PROVIDED BY FRESHWATER FISH MARKETING CORPORATION



MV Poplar River barge being launched into Lake Winnipeg at Hnaua Harbour

CEDF provides access to capital for commercial fishers.

Licensed Commercial Harvesters can borrow up to \$75,000 (subject to earnings levels) for the purchase or repair of equipment used in a viable fishing operation as well as to assist in the purchase of quota entitlement.

CEDF plays an important role in the development of commercial fishing industry in Manitoba. In the last 30 years from 1993 to 2023, an average of 67.7% of Manitoba fishers had at least one fish loan with CEDF.

To apply for CEDF Harvester Loans, visit cedf.mb.ca/fisheries-program/ or scan the QR code below:



 **CEDF**  **LOOK NORTH**

Communities Economic Development Fund

Visit and Invest in Northern Manitoba,
a region rich in resources and experiences.



EMPOWERING COMMERCIAL FISHERS.

PHOTO BY TAYLOR KITTLE



HUDBAY

PROVIDED BY HUDBAY

The metals Hudbay produces are playing a vital role in the energy transition as the world moves towards a greener future. And with almost a century of history as a leading mining company in Canada, with active mines in Manitoba and British Columbia, Hudbay takes its role as a leader in the field seriously. Manitoba, in particular, is poised to take on an essential role in critical mineral exploration with the help of CEDF.

In 1927, our journey began with developing our first mine in Flin Flon, Manitoba. Since then, we have operated 29 mines in the province. In 2022, Hudbay reached a significant milestone in its journey marked by the closure of 777 mine and ceasing of mining activities in Flin Flon, paving the way for a promising future centered on Snow Lake, Manitoba.

Since growing our operations in Snow Lake, we have focused on continuous improvements, including the completion of construction and refurbishment at the New Britannia mill, along with the implementation of a metal recovery improvement project at the Stall mill, ensuring we can recover valuable resources.

We foster socioeconomic opportunities in the regions where we operate through jobs, business opportunities, taxes and royalties, community development programs and investments in infrastructure.

Our approach to community engagement is to build relationships based on trust, transparency and mutual respect – honoring the cultures and heritage of all communities near our operations and ensuring we recognize the specific rights, culture and history of Indigenous peoples.

Our commitment to engaging with Indigenous rightsholders has been recognized with the achievement of the Canadian Council for Aboriginal Business (CCAB) Progressive Aboriginal Relations (PAR) Silver Level status in 2022. We continue to actively collaborate with CEDF to conduct workshops on economic development, fostering growth and empowerment within our communities of interest.

As we move forward, Hudbay's legacy reflects a century of growth, adaptation, and unwavering commitment to the future.

To learn more about Hudbay Minerals, visit www.hudbayminerals.com



PHOTOS BY HUDBAY

DIGGING THE RIGHT PATH FORWARD IN MANITOBA



MEET COPPER

Used in electrical wiring, household tools, and plumbing. One of the many critical minerals found in Manitoba.

Manitoba's minerals and metals are shaping our world.

A thriving mining industry makes a positive impact on communities in the North and across the province. More than 3,000 people already work in rewarding mining careers with great benefits, growth opportunities, and average annual salaries over \$100,000.

Explore a Career in Mining

There are many career opportunities in mining that require diverse skillsets and talents, including: Technician, Mechanic, Safety Coordinator, Geologist, Construction Worker, Reclamation Officer, Logistics, Administration, Finance, and more!

To learn more visit UncoverProsperity.ca



NORVA CENTRE

CONNECTING PEOPLE THROUGH ART

Northern Visual Arts Centre Inc, also known as NorVa Centre, is an art gallery and studio committed to enhancing the culturally vibrant community of Flin Flon and surrounding area by providing northern artists a creative, dynamic, and welcoming space where visual artists can develop, educate, exhibit and grow. The Centre offers monthly exhibitions, artist talks, workshops, mentorships, a working studio and a shared community space.

Their gallery space hosts solo or group exhibits showcasing first-time artists and highly acclaimed provincial and interprovincial artists alike. Coaching along with modest exhibit and artist speaker fees are provided to all gallery artists; most of which are first time exhibitors. Their studio fosters creation, socialization and collaboration among artists. Members receive their own work space for creation and a space to display and sell their artwork. They also have access to shared supplies and receive discounts on select classes.

Since their inception in 2010, the NorVa Centre has relied on grants from the Manitoba Arts Council, fundraisers, membership fees and volunteers to stay in operation year round. They support the idea that community art spaces

function as a conduit for building social networks that contribute to both community revitalization and artistic development.

To build on and fund current and future developments as a not-for-profit, NorVa needed to increase their online presence, attract more visitors and therefore, generate more business for local emerging artists. With support from CEDF they improved their marketing plan by upgrading their website, updating artists bios and adding e-commerce capabilities at their Centre. CEDF also supported a branding workshop for small businesses. In the future, NorVa plans to market merchandise online and add an electronic Point of Sale system to expand their online sales.

To learn more, visit www.norvacentre.com



PHOTOS BY NORVA CENTRE

WOMAN IN MINING - CAREER PROFILE

PROVIDED BY HOLLY MARTIN

My name is Holly Martin and I'm a member of Mosakahiken Cree Nation of Treaty 5 Territory; I grew up in Treaty 4, Regina, SK and acquired an educational background in art and art history. I thought my life was going to be about art and art education, and possibly working with youth. When I could no longer attend school, I headed North to Thompson, MB to visit my father, and began working as a labourer in the smelter at the local nickel mine, fully expecting to earn just enough to finish my art education.

Looking back, it was during the group-interview portion of the hiring process that introduced me to the importance of working together as a team. It was the first of many opportunities I'd have to work with a team to get big things accomplished – and one that led me to my current role. Today, I am still using the skills I learned to work with yet another big group—a community—to achieve a widespread state of work readiness in my role as Training Coordinator with Alamos Gold Inc. in Lynn Lake.

When I started at the mine in Thompson, I was invited to participate in a training-to-employment program, since I had no previous industrial work experience (I had worked mainly in an art gallery and wasn't even aware that mining was a major industry). While in the program, I learned about the mining process from exploration to final product, the various entry level roles and gradually introduced to the mining world.

Over time, I moved from labourer position to operating a skid steer, minding the roasting process at the smelter. As the mine transitioned to a Mine & Mill operation, I was given a new role underground where I was one of three women in a group of 300 workers, compared to the 15 women who I worked with in the smelter.

Underground I was challenged to try many different underground tasks from gear handling to stope drilling. I took a wash-bay attendant position that I had originally thought was punishment – until I realized that I actually enjoyed it and the sense of satisfaction of seeing immediate results from my efforts. I stuck close to the underground maintenance side of things, until eventually I was asked to become an underground maintenance supervisor. That was the most challenging role I've performed to date, and I give a major shoutout to any frontline supervisor working to keep mining operations running smoothly.

After the many experiences at the mine, I was part of a workforce adjustment that sometimes occurs in mining. This led to working for another organization focused on workforce development. This brought me back to my early career aspirations of working with youth, although in the form of introducing youth to careers in mining and skill development. I am still working in this capacity as a Training Coordinator with Alamos Gold Inc., mainly with the Town of Lynn Lake and Marcel Colomb First Nation.

I have passion for broadening the horizons of youth and peers who haven't been exposed to the same opportunities that I had and supporting the journeys of those around me. "You can't be what you can't see," and "before we have healthy workers, we need healthy people" are driving concepts for what I do now. I am excited to see our community members becoming part of our developing new gold mine, its operations, and anticipated 14-year life of mine.



CREATING OPPORTUNITIES AND UNLEASHING CREATIVITY IN NORTHERN MANITOBA:

SKILLS SHOP NORTH IS THE NEW MAKERSPACE IN THOMPSON

Imagine a great community space, fully equipped with technology and tools to support skills development in woodworking, metal working, industrial sewing, 3D printing, computer programming and robotics, and open to anyone in the community. Skills Shop North is the newly branded, 4,500 sq ft makerspace that has place, equipment, people and programs ready to support community members of all ages and abilities and is gearing up for its formal launch this spring.

Initiated through a partnership between University College of the North and North Forge Technology Exchange, the facility (previously called North Forge North) has already run a variety of programs for seniors, elementary and high school students, as well as trades people seeking to upgrade their skills. With well over \$800,000 of investment in state-of-the-art machinery, cutting-edge technology and tools, the final commissioning of the wood shop and metal working areas is now complete. A new not-for-profit organization has been created to take the facility forward, designing programs to meet the specific needs of the Northern Manitoba communities and businesses. Skills Shop North is dedicated to delivering high impact programming through a variety of partnerships to support skills development, youth employment opportunities, community projects and entrepreneurship experiences

"We have been very pleased with the high level of support and enthusiasm from the community and local industry partners", said Jordan Ilott, President of Skills Shop North. "UCN and North Forge have laid the foundation for an amazing resource here in Thompson, and we look forward to continuing to build on that great work." Skills Shop North is also a key asset to support economic development as start-ups, entrepreneurs and local businesses will also have access to the space to create new products, and in the competitive landscape of talent attraction, Skills Shop North is a game-changer. Young professionals, skilled artisans, and tech-savvy individuals are drawn to places that foster a culture of innovation. "By providing a space where creativity knows no bounds, we are not only retaining our local talent but also attracting individuals from far and wide who seek an environment that nurtures their inventive spirit". said Ilott.

Skill Shop North invites organizations to tour the space and to explore the potential for new partnerships. Contact them at: info@skillsshopnorth.com, or visit them on the web at www.skillsshopnorth.com

PROVIDED BY SKILL SHOP NORTH



TRADITION MEETS

TECHNOLOGY

BSD XR is an innovative company that leverages cutting-edge technologies to create immersive learning experiences for classrooms and workplaces. We specialize in Extended Reality (XR), including Augmented Reality (AR) and Virtual Reality (VR), AI development (CAASPER), and IoT/Computer Vision solutions (SWRM). Their services encompass consulting, data engineering, development, support, and training, alongside VR and AR development, AI consulting, bot development, IT integration, mobile app development, and web development. BSD XR has been recognized as a top AR/VR development company in Canada for 2020/21/22/23, highlighting their expertise and contributions to immersive technology spaces

In Northern Manitoba, BSD XR has engaged in significant collaborations with the Communities Economic Development Fund (CEDF) to leverage XR technologies for cultural and industrial projects. One notable initiative involved creating digital tours and scanning artifacts for prominent museums in Thompson and Snow Lake. This venture aimed to digitize and preserve cultural heritage, making it accessible worldwide through interactive digital tours. The Heritage North Museum in Thompson and the Mining Museum in Snow Lake were central to this project, showcasing the region's rich history and contributions to the mining industry through immersive digital experiences.

Additionally, BSD XR's collaboration with CEDF extends into the mining sector, emphasizing the development of VR-based training solutions tailored for the Canadian mining industry. This initiative underscores the potential of VR technology to revolutionize traditional training methods by providing realistic, engaging, and safe environments for workers to hone their skills and understand complex processes.

These collaborations between BSD XR and CEDF highlight the transformative impact of XR technologies in preserving cultural heritage and enhancing industrial training. By bringing innovative solutions to Northern Manitoba, BSD XR is at the forefront of utilizing VR and AR to bridge the gap between traditional practices and futuristic technology, fostering a deeper understanding and appreciation of the region's cultural and industrial legacies.

PROVIDED BY BITSPACE DEVELOPMENT

To learn more about BSD XR's work, visit www.bitspacedevelopment.com



PHOTOS BY BITSPACE DEVELOPMENT



BSD XR

IMMERSIVE TECHNOLOGY EXPERTS

IMMERSE IN VIRTUAL REALITY

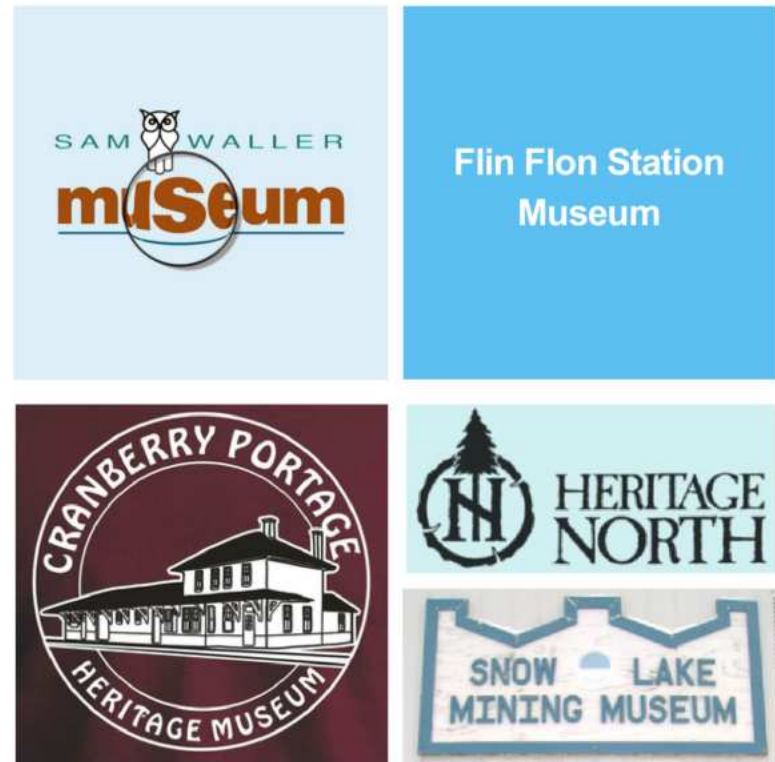
CEDF identified a few shared challenges that Northern Manitoba museums face, including artifact preservation and accessibility since museums are often located in Heritage buildings. The solution? Digitization.

In partnership, Bit Space Development and K&M Consulting, two Manitoba based tech companies travelled to five Northern MB museum's where they captured Panoramic 360-degree content. The result was a complete web based Virtual Reality (VR) experience including detailed descriptions of key artefacts along with 360-degree imagery.

Each museum was also provided with a VR headset to share their offering on or off location. It is anticipated that these interactive offerings will help increase visitors, preserve important historical exhibits, and attract a younger audience.

Each museum can decide how their new digital experience will be shared. Some plan to use for youth outreach, others plan to update their offering on a regular basis to keep it relevant and some plan to use as a travelling marketing tool.

Museums that have tapped into virtual reality:



CRANBERRY PORTAGE MUSEUM



SAM WALLER



FLIN FLON STATION MUSEUM



HERITAGE NORTH MUSEUM



SNOW LAKE MINING MUSEUM



LOBBY FOR THOMPSON AND SNOW LAKE MUSEUMS

"I think this is fitting for any museum, I have seen the association of MB Museums working on digital displays already, i think it's the way of the future."

—— SNOW LAKE MINING MUSEUM

"The use of this technology has helped us envision the possibilities that may come in the future, to sharing our history with the rest of the world. "

—— FLIN FLON STATION MUSEUM

"Although it is taking a little getting used to and we are only scratching the surface on how Virtual Reality can be used, the VR headset and tours are bringing history to life in ways previously unimaginable. It's not just about observing history; it's about experiencing it. The looks on faces and unbridled comments from those who have taken the plunge and tried our VR headsets are a testament to the uniqueness and excitement of this medium."

—— CRANBERRY PORTAGE HERITAGE MUSEUM



Communities Economic Development Fund

BUSINESS LOANS PROGRAM

Provides repayable loans for high impact economic development opportunities where traditional funding may not be available.

Eligible Projects

- Natural resource related, such as mining, forestry and commercial fishing and their supply chains.
- First Nations partnerships
- Strategic infrastructure

Who Can Apply?

- Any business entity north of the 21st township.
- Any Indigenous entity or partnership that promotes and/or enhances Indigenous economic development outside the City of Winnipeg.

Scan the QR code below or visit www.cedf.mb.ca/business-loans/



YOUR PATH TO BUSINESS SUCCESS STARTS HERE

Explore our interest-free loans and grant opportunities, tailor-made for your First Nation entrepreneurial journey.

FIRST PEOPLES economic growth fund
Your Growth Partner

Discover more and apply easily

Loans

Advice

Support

Community Futures Greenstone

Did you know that Community Futures Greenstone offers a wide range of services to help grow and develop your business?

From business planning and coaching to funding and networking opportunities, Community Futures has the tools and resources you need to take your business to the next level. Whether you're just starting out or looking to expand, Community Futures can help.

Don't miss out on this valuable opportunity to get the support and guidance you need to succeed!

Phone: 204-887-6967 * E-mail: admin@cfgreenstone.com * www.cfmanitoba.ca/greenstone

CHURCHILL NORTHLANDS DENESULINE FIRST NATION
SAYISI DENE FIRST NATION MATHIAS COLOMB FIRST NATION
BARREN LANDS FIRST NATION FOX LAKE CREE NATION
GILLAM SHAMATTAWA FIRST NATION
CHEMAWAWIN CREE NATION **GRAND RAPIDS**
MISIPAWISTIK CREE NATION
FLIN FLON **LEAF RAPIDS**
LAKELAKE O-PIPON-NA-PIWIN CREE NATION GRANVILLE LAKE
LYNN LAKE **THE PAS**
MARCEL COLOMB FIRST NATION MOSAKAHIKEN CREE NATION
OPASKWAYAK CREE NATION
KELSEY HERB LAKE LANDING EASTERVILLE
MOOSE LAKE CORMORANT **SHERRIDON**
BROCHET THOMPSON
BUNIBONIBEE CREE NATION GARDEN HILL FIRST NATION
MANTO SIPI CREE NATION NORWAY HOUSE CREE NATION
NISICHAWAYASIAHK CREE NATION ISLAND LAKE
TATASKWEYAK CREE NATION RED SUCKER LAKE
WASAGAMACK FIRST NATION
WAR LAKE FIRST NATION GODS LAKE NARROWS
MYSTERY LAKE THICKET PORTAGE **PIKWITONEI**
ST. THERESA POINT FIRST NATION ILLFORD WABOWDEN
YORK FACTORY FIRST NATION



NORTHERN MANITOBA SNOWMOBILE TOURISM PROJECT

PROVIDED BY SLEDMB53

Several years ago, a few snowmobile enthusiasts from local clubs and communities expressed interest in raising the bar with promoting snowmobiling in Northern Manitoba. As a regional project, CEDF joined forces with Community Futures North Central Development, Greenstone and Cedar Lake Travel Manitoba to create and carryout a well-built strategy with the goal of making Northern Manitoba a premier snowmobile destination.

Over the past 5 years or so, the partners have worked with the local snowmobile clubs and communities to execute several project objectives. Some of these are:

- Creation of a marketing Brand and Logo “SledMB53”.
- Development of an interactive website (SledMB53.ca) to navigate visitors to community tourism pages, snowmobile clubs, snowmobile events, SnoMan Trail Maps and more.
- Creation of the Sled Friendly Program. This is a training and certification program for northern businesses and communities to put their best foot forward in welcoming snowmobiler to the north
- Commenced the building of a new SnoMan trail between Cranberry Portage and Snow Lake (of special note, once this trail is done the entire north will be linked by SnoMan trails all the way south!)
- Worked with Heartland Travel and Tours to offer the inaugural Quest for the Bay – 5-day escorted snowmobile tour from Thompson to Churchill.(of special note, this tour was attended by media and will be featured on On Snow - Snowmobiler TV in 2023!)

Tourism is a significant economic driver in Northern Manitoba. Travel Manitoba has identified the need for creation of product and experience development as a key priority to develop the industry in the region. Additionally, snowmobiling is a very lucrative industry in Manitoba according to an economic impact study delivered by SnoMan Inc. and Travel Manitoba in 2023. With the knowledge we have, it makes good sense to explore and develop the future of the snowmobile tourism industry in Northern Manitoba.



EXPLORE
THE
NORTH

PHOTO BY CEDF

UNDERSTANDING MODERN MINING: KEY TO MANITOBA'S PROSPERITY

There has never been a more exciting time in Manitoba's mining industry and the sector's potential impact and benefits for this province have never been greater. Getting this message out, however, remains critically important.

That's where the Mining Association of Manitoba (MAMI) steps in, having been the primary voice of the industry for over 80 years. MAMI represents the four operating mines in the province and over 20 industry associate members, including contractors, suppliers, and geo-services. The organization is now reaching out to the industry for new members to broaden its base, get involved, weigh-in on key issues and opportunities and be part of this growth.

"MAMI has a legacy of consultation, collaboration and education with stakeholders including training partners such as UCN and Indigenous groups," says MAMI President and Vale Head of MB Operations Stacy Kennedy. "There is strength in numbers, and we all work together in establishing the province as a leading place of growth and prosperity through mining."

This year, for the first time ever with the full support of the provincial government, MAMI launched Uncover Prosperity Manitoba, a multi-media campaign aimed at enhancing awareness and creating a better understanding around modern mining, including the critical role it plays and will have on the province's future.

"CEDF, with their focus on 'looking ahead and looking North', will launch a parallel education program that will ultimately become part of schools' curricula in the North, says John Morris, MAMI Co-Executive Director. "The initiative fits well with our overall education agenda."

These two organizations and programs share a common goal: reaching young people in Manitoba as research has shown they have little to no awareness of mining. Through education, young Manitobans will have a better understanding of the tremendous employment opportunities available, the strong environmental, safety and social standards around mining in Canada, plus the positive impacts mining can have on their communities.

As mining projects are years – and sometimes decades – in the making momentum is key. There are several promising projects on the horizon in the province related to gold, copper and zinc and lithium. e tremendous employment opportunities available, the strong environmental, safety and social standards around mining in Canada, plus the positive impacts mining can have on their communities.

"Manitoba is in an unprecedented time of exploration – on the cusp of a minerals boom," says Kennedy. "These projects require incredible development investments and in turn generate significant employment opportunities and other benefits for all Manitobans."

PROVIDED BY MINING ASSOCIATION OF MANITOBA INC.



PHOTOS BY MINING ASSOCIATION OF MANITOBA INC.

NORTHERN MANITOBA ARTS STRATEGY & NORTHERN ARTS WORKSHOP



PHOTOS BY COMMUNITIES ECONOMIC DEVELOPMENT FUND

Arts as an economic driver in Northern Manitoba had been a topic of conversation for sometime. In March of 2022 CEDF, as part of their Look North Initiative, took a deeper dive into the topic and partnered with Arts and Heritage Solution to prepare an Arts & Culture Strategy for Northern MB. This document provided valuable insight on the status of arts at the time and identified gaps and opportunities.

As a result of this strategy and recommendations from University College of the North, a Northern Manitoba Arts Workshop was hosted March 21-23, 2023 in Bakers Narrows, MB. The intent was to bring artists and supporters together to further develop the ideas and contacts identified in the Arts & Culture report. The event is held on March 24-27, annually. The Pas MB hosted the 2024 Northern Arts Workshop on March 24-27 and it was a huge success.

Help youth explore the many career options in Canada's mining industry.

Careers in Mining: A Teaching Resource

Incorporate our curriculum in your grade 7-10 classroom today to inspire the next generation.

bit.ly/mihrcurriculum

MINING INDUSTRY
HUMAN RESOURCES COUNCIL
CONSEIL DES RESSOURCES HUMAINES
DE L'INDUSTRIE MINIÈRE

Funded in part by the
Government of Canada.



EMPOWERING VOICES, STRENGTHENING ECONOMIES:

CELEBRATING WOMEN'S LEADERSHIP IN NORTHERN MANITOBA

In the fast-evolving landscape of economic development, the inclusion and empowerment of women in business and community leadership go beyond equity—they are essential for fostering strong economies. In the heart of Northern Manitoba, Community Futures Greenstone is leading the charge in this arena with its annual Women in Business & Community Celebration. This event is more than a gathering; it's a testament to the untapped potential and pivotal role women, female-identifying, and non-binary individuals play in shaping the economic and social fabric of our region.

The Women in Business & Community Celebration is not your typical corporate event. Picture a room buzzing with energy, the air thick with anticipation and the spirit of camaraderie. There's great food that seems to taste better with every networking conversation, and a vibe so fun it could almost make you forget the profound purpose behind the gathering. But make no mistake—the heart of this celebration beats strong with the stories, efforts, contributions, and accomplishments of remarkable individuals across our region.

Take, for example, last year's event, which featured none other than Joelle Foster, the CEO of North Forge. Joelle's story is one of determination, innovation, and leadership, embodying the very essence of what it means to turn passion into purpose. Her insights and experiences provided invaluable inspiration and guidance to those in attendance, illustrating the profound impact that one individual can have on their community and beyond.

This year, the celebration is taking an exciting new turn with a moderated panel of northern women who will share their own journeys of turning passion into purpose. This format promises an exploration of the challenges and triumphs faced by women in business and leadership, offering a mosaic of perspectives that are as diverse as they are enlightening.

Moreover, empowering women in business and community leadership helps to challenge and change the systemic barriers that have historically marginalized these voices. By creating spaces where women's achievements are celebrated and their challenges addressed, we not only elevate individual women but also set a precedent for future generations. This is about laying the groundwork for a more equitable and prosperous future for all members of our community.

The significance of Community Futures Greenstone's Women in Business & Community Celebration extends beyond the event itself. It's a beacon of progress, a call to action, and a reminder of the work that still needs to be done. It's about recognizing the incredible contributions women have made and continue to make, despite the obstacles they may face. But it's also about acknowledging that these contributions are not just commendable—they are essential to the health and growth of our economies and communities.



The path to stronger communities is paved with the talents, insights, and leadership of women. While we embark on that path let's also commit to taking concrete steps towards inclusivity and equity in all aspects of business and community life. Let's continue to turn passion into purpose, together, for a stronger, more vibrant economy that benefits everyone.

PROVIDED BY BECKY CIANFLONE, COMMUNITY FUTURES GREENSTONE



PHOTOS BY COMMUNITY FUTURES GREENSTONE

WHY JOIN THE CHAMBER?



204-623-7256 www.thepasocnchamber.ca



REALIZING MANITOBA'S MINING POTENTIAL

Network and showcase your business or organization within Manitoba's quickly growing and evolving mining sector.

JOIN US!

MININGMANITOBA.ORG/JOIN-MAMI

EMAIL mami@miningmanitoba.org

PHONE 204.989.1890



ATTRACTING INVESTMENT AND STIMULATING ECONOMIC DEVELOPMENT IN MANITOBA

PROVIDED BY MANITOBA MINERAL DEVELOPMENT FUND

The Manitoba Mineral Development Fund (MMDF) recognizes the critical role of a robust mining supply chain in Manitoba. Through targeted investments, we empower local businesses and workers, fortifying the mining supply chain and fostering resilience in the face of economic challenges. MMDF is a \$20M provincial fund, administered by the Manitoba Chambers of Commerce (MCC). MMDF provides funding for northern economic development and mining projects that create indigenous partnerships, increase local employment, and stimulate investment in Northern Manitoba.

MMDF projects fall into three main categories: community economic development, indigenous enterprise and partnerships, and mineral exploration. As of February 2024, MMDF had approved \$14,253,925 in funding to 83 projects.

MMDF Impact To Date:

- 429 Short Term Jobs
- 209 Long Term Jobs
- 185 Community and Indigenous Partnerships

By investing strategically in mineral exploration initiatives, we aim to unlock the untapped potential of Manitoba's mineral resources, driving growth and prosperity in the region. Central to our mission is the cultivation of meaningful partnerships with Indigenous communities and businesses. Through collaborative efforts, we seek to advance economic reconciliation, ensuring that Indigenous voices are not only heard but also integral to the development of the mining sector. We are committed to supporting mining communities affected by changes in mining activity. By investing in economic diversification and resilience, we strive to mitigate the impact of such changes, ensuring sustainable growth and prosperity for all stakeholders.

To learn more visit www.mmdf.ca



PHOTO BY PAINT LAKE LODGE

ADVENTURE AWAITS AT PAINT LAKE LODGE

Whether it is summer or winter — if you're up for some world class fishing and northern hospitality, Paint Lake Lodge is the perfect destination. Located within Paint Lake Provincial Park, just south of the City of Thompson, the lodge offers incredible drive-to pickerel fishing on one of Northern Manitoba's premiere lakes year-round.

It is a family affair for Kathy and Barry Ruitter, owner and operators of Paint Lake Lodge with both their daughter and son also working for their business. Summer is peak season for managing their licensed 150 seat dining room and lounge, nine fully equipped cabins, full-service store with tackle, bait, gas and ice cream shop. They also offer fishing guides, boat rentals and recently opened their repair shop on weekends with onsite power sports technician.

The lodge is open on weekends during the winter and is a popular destination for snowmobilers, cabin goers and ice fishing. As part of their marketing strategy to grow their business, they are working on a video with Travel Manitoba to promote Paint Lake Lodge as a destination hotspot.

They are also focused on expanding their winter tourism experience. With financial assistance from CEDF, they purchased equipment to start offering ice fishing packages for avid anglers who may not have all the equipment for winter fishing. These packages provide everything you need for a day out on the lake.

Kathy Ruitter shared that it's been a great experience working with CEDF. They are starting into their 10th year in business and they are looking forward to the adventures ahead.

To learn more about Paint Lake Lodge, visit www.paintlake.ca



DIGITAL INTERNSHIP WITH NORTHERN MANITOBA YOUTH

New Media Manitoba is working with the Communities Economic Development Fund to provide opportunities for Northern Manitoba. Interested candidates can apply for internships and selected interns will work remotely for Manitoban tech companies, allowing youth to stay in their communities and gain work experience.

Employers are interested in hiring roles for:

- ✓ Social media marketing
- ✓ Development/programming
- ✓ IT support
- ✓ Email outreach
- ✓ Research



To learn more, scan the QR code above or visit www.newmediamanitoba.com

For questions about this program, please contact:
Corinne Gusnoski
Business Development Manager | New Media Manitoba
hr@newmediamanitoba.com


Funding Provided by:
The Manitoba Government











RMED Rural Manitoba Economic Development Corporation
rmedcorp.ca



MDS AEROTEST AND GLOBAL AEROSPACE CENTRE FOR ICING AND ENVIRONMENTAL RESEARCH (GLACIER)

PHOTO BY MDS AEROTEST

The Glacier AeroTest facility in Thompson, MB is joint venture between Rolls-Royce Canada and Pratt&Whitney Canada which is operated and maintained by MDS AeroTest. This specialized facility for testing of turbofan engines for aircraft is used for icing certification testing and takes advantage of the naturally occurring cold weather in Thompson.

The test facility accommodates the largest aircraft engines in existence today and will support the future growth of gas turbine engines with fan diameters of up to 140 inches capable of producing up to 150,000 pounds-force thrust. The test stand is equipped with a state-of-the-art icing system, which has been designed and supplied by the National Research Council of Canada. The system consists of a direct connect icing tunnel and multiple spray bars to control both water concentration and droplet diameters. In addition to icing testing the facility can perform many other types of tests for which an outdoor test facility is suitable.

MDS AeroTest's operation and maintenance scope includes test program planning and execution, handling of engines and specialized test equipment, supply of consumables such as aviation fuels and oils and the operation of all aspects of the facility and engines which are tested. MDS AeroTest's multidisciplinary team supports all aspects of engine testing and facility maintenance while operating within an AS9100 certified aerospace quality management system.

PROVIDED BY MDS AEROTESTING



THE PAS Community Development Corporation

The Pas Community Development Corporation exists to support the Tri-Community (The Pas, OCN & the RM of Kelsey) in developing the community and the region. This is done by developing innovative strategies and achieving growth through business services and community economic development initiatives. Our economic development framework and roadmap provides a directional and functional tool to support decision making and service delivery processes.

CED guiding principles provide The Pas CDC a foundational understanding of the elements and process that best reflect CED practices. The principles seek to ensure that The Pas CDC:

- Pursue alignment with community stakeholders
- Support community economic development efforts through services and programs
- Embrace and adjust to change
- Balance Capacity with capabilities
- Commit to transparency and accountability

The Pas Community Development Corporation provides the community with tools and resources needed to conduct business here. Some of the services provided include the down payment assistance program, storefront improvement program, tourism development and our very own shop local campaign. We also market the region to investors, support community partnerships and help navigate the community.

Visit www.thepascdc.com for more information. Feel free to contact us.

**PROVIDED BY THE PAS COMMUNITY
DEVELOPMENT CORPORATION**

work in manitoba

Where opportunity & job seekers meet

Attract Top Talent to Your Northern Business

Northern Manitoba is brimming with opportunity – more than 1,400 Manitoba employers are already using the Work in Manitoba job portal to recruit skilled talent. Over 43,000 job seekers are waiting to connect.



Create your free employer profile
today at workinmanitoba.ca

Manitoba 

UNIVERSITY COLLEGE OF THE NORTH

Class 5 Adult Driver Training Program

PROVIDED BY UNIVERSITY COLLEGE OF THE NORTH



New Class 5 Driver's from Lynn Lake, MB



UCN's first new Class 5 driver of the program from Churchill, MB:

The University College of the North (UCN), in collaboration with Manitoba Public Insurance (MPI), have launched the UCN Class 5 Adult Driver Training Program. The goal of the program is to improve road safety and workforce development in Northern Manitoba. The program was designed to address the long-known barriers of achieving a Driver's license such as access to both in class and in car driver training, affordability and the use of a vehicle for road testing. The UCN Program addresses all of these barriers by travelling to communities across the North with fleet cars, instructors and coordinating testing directly with MPI to improve the chance of success for the students.

We are pleased to report that the Class 5 Adult Driver Training Program has garnered substantial interest in Northern Manitoba. Despite minimal advertising efforts following the official launch in July 2023. The program continues to attract attention and inquiries for communities across the North. This level of engagement, largely driven by word-of-mouth and the initial announcement, underscores the significant need and enthusiasm for such a training initiative. The sustained interest without further advertising campaigns is a testament to the program's relevance and the demand for quality driver training in the region.

For more information on the Class 5 Adult Driver Training program please visit our website at ucn.ca or contact class5driver@ucn.ca





PHOTO BY TAYLOR KITTLE

CEDF PARTNERS





Growing Communities
One Idea at a Time

Start Your Own Business

Support services and financial assistance to eligible entrepreneurs.

- ▶ Business Loans
- ▶ Entrepreneurs with Disabilities Investment Fund
- ▶ Indigenous Women Entrepreneurship Program
- ▶ Self Employment Program



Community Futures North Central Development



IWE

Toll Free: 1-888-303-2232




FOR OVER 60 YEARS, CALM AIR HAS BEEN PROUD TO SUPPORT THE COMMUNITIES, BUSINESSES AND ECONOMIC DEVELOPMENT OF NORTHERN MANITOBA.

Calm Air



THOMPSON Chamber of Commerce
 www.thompsonchamber.ca
 Ph. 204 677 4155

NORTHERN TRANSPORTATION SYMPOSIUM

SAVE THE DATE!
September 5-6, 2024 in Thompson, MB

AIR • AIRSHIPS • DRONES • RAIL • RAILBUS • HIGHWAYS • WINTER ROADS

A comprehensive two day Symposium on all aspects of transportation for northern Manitoba - Exploring challenges and opportunities to improve sustainable growth, economic development, to seek partnerships and better health and social parameters. Topics covered will be -

- Developing an intermodal hub for the North.
- How will climate change effect the northern road system?
- What will new transportation technologies hold for the future?
- How to partner with and service Indigenous remote communities?

CAREER TREK IN THE NORTH



CAREER TREK

Career Trek is a registered charity that helps young people discover the importance of education and career development. Career-focused programming, complete with hands-on activities, ignites participants' passion for learning and curiosity.

Participants explore careers across a number of key sectors such as healthcare, trades, technology, engineering, mining, entrepreneurship, agriculture, science, and so much more! This type of exploration is vital as they chart their path forward and plan for the future!

FOR MORE INFORMATION:

431-754-9452
hpruder@careertrek.ca






 careertrek.ca

Charitable Registration no: 86835 0547RR0001





THE NORTHERN MANITOBA STORY

Northern Manitoba

The place where the creator sits - Manitou
Api, a place of untamed beauty.

A place with a ten thousand year legacy
of adventure and trade, where people work
with, not against, mother nature.

A place that breeds resilience, strength
and humility, where a proud people warmly
greet you.

A place of natural and cultural riches,
awaiting your discovery.

LOOK  NORTH

THANK YOU.

CEDF would like to extend our gratitude in thanking stakeholders, organizations and businesses that participated in helping us showcase the economic development and Indigenous reconciliation in Northern Manitoba.

CEDF would also like to thank the following for making the Look North magazine into a reality:

Alyzza Que, Communications Officer

Designer

Stephanie Johnson, Look North
Economic Development Advisor

Outreach

Tara Ritchie, Programs and Project Manager

Outreach

Chris Thevenot, CEO

Jenny Krentz, CFO

and to all staff who assisted and contributed in past, and present projects.

HEAD OFFICE

15 Moak Crescent, Thompson, MB R8N 2B8

SUB OFFICE

1-79 Main Street, Flin Flon, MB R8A 1J9

If you'd like any further information on projects you have seen or would like to reach out to us, please contact us at **1-800-561-4315** or email us at **admin@cedf.mb.ca**

PHOTO BY NUNO PEREIRA
UCN LINKAGES - VALE'S "ROCKY" MINE RESCUE BOT



www.cedf.mb.ca



@cedfmanitoba



Communities Economic
Development Fund



@CEDFMB



Communities Economic
Development Fund